

## \$549,900 - 601 141 Festival Way, Sherwood Park

MLS® #E4417255

**\$549,900**

2 Bedroom, 2.00 Bathroom, 1,388 sqft

Condo / Townhouse on 0.00 Acres

Centre In The Park, Sherwood Park, AB

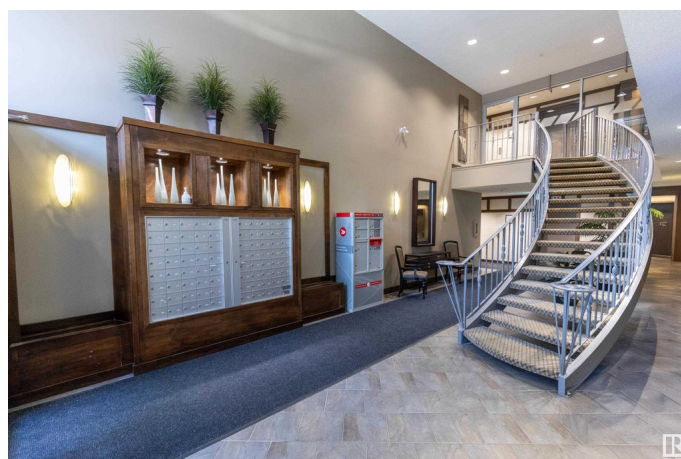
Discover unparalleled luxury in this spectacular penthouse suite located in the prestigious Centre in the Park. This concrete & steel masterpiece features floor-to-ceiling windows that flood the space w/natural light, while offering stunning views. The kitchen is a chef's dream, showcasing dark cabinetry, granite throughout, a sit-up island, & stainless steel appliances. It opens seamlessly to the living room, complete w/a corner gas fireplace & dining area, all set under soaring 14' ceilings. This unit boasts 2 spacious bedrooms w/the primary suite offering a walk-thru to 4 separate closets & a luxurious 5pc ensuite w/a separate shower & tub. From here, step onto the massive 24' deck to take in breathtaking views. Completing the condo is an additional 4pc bathroom, laundry room & high-end finishes throughout. The suite also comes w/2 titled u/g parking stalls & storage cage, ensuring convenience & ample storage. These penthouse units seldom come available - don't wait to make this one yours!

Built in 2007

### Essential Information

MLS® # E4417255

Price \$549,900



|                |                        |
|----------------|------------------------|
| Bedrooms       | 2                      |
| Bathrooms      | 2.00                   |
| Full Baths     | 2                      |
| Square Footage | 1,388                  |
| Acres          | 0.00                   |
| Year Built     | 2007                   |
| Type           | Condo / Townhouse      |
| Sub-Type       | Lowrise Apartment      |
| Style          | Single Level Apartment |
| Status         | Active                 |

### Community Information

|             |                      |
|-------------|----------------------|
| Address     | 601 141 Festival Way |
| Area        | Sherwood Park        |
| Subdivision | Centre In The Park   |
| City        | Sherwood Park        |
| County      | ALBERTA              |
| Province    | AB                   |
| Postal Code | T8A 3V8              |

### Amenities

|           |  |
|-----------|--|
| Amenities | Air Conditioner, Car Wash, Exercise Room, Guest Suite, Parking-Visitor |
| Parking   | Heated, Underground  |

### Interior

|                   |  |
|-------------------|--|
| Interior Features | ensuite bathroom   |
| Appliances        | Dishwasher-Built-In, Dryer, Microwave Hood Fan, Refrigerator, Stove-Electric, Washer, Window Coverings |
| Heating           | Fan Coil, Heat Pump, Natural Gas   |
| Fireplace         | Yes  |
| Fireplaces        | Corner   |
| # of Stories      | 6  |
| Stories           | 1  |
| Has Basement      | Yes  |
| Basement          | None, No Basement  |

### Exterior

|                   |  |
|-------------------|--|
| Exterior          | Concrete, Brick, Stucco                |
| Exterior Features | Public Transportation, Shopping Nearby |

|              |                         |
|--------------|-------------------------|
| Roof         | EPDM Membrane           |
| Construction | Concrete, Brick, Stucco |
| Foundation   | Concrete Perimeter      |

**Additional Information**

|                |                   |
|----------------|-------------------|
| Date Listed    | January 7th, 2025 |
| Days on Market | 186               |
| Zoning         | Zone 25           |
| Condo Fee      | \$966             |

DATA IS DEEMED RELIABLE BUT IS NOT GUARANTEED ACCURATE BY THE REALTORS® ASSOCIATION OF EDMONTON. COPYRIGHT 2025 BY THE REALTORS® ASSOCIATION OF EDMONTON. ALL RIGHTS RESERVED.Trademarks are owned or controlled by the Canadian Real Estate Association (CREA) and identify real estate professionals who are members of CREA (REALTOR®, REALTORS®) and/or the quality of services they provide (MLS®, Multiple Listing Service®)

Listing information last updated on July 12th, 2025 at 8:02pm MDT