

\$724,900 - 2015 Price Landing Landing, Edmonton

MLS® #E4422765

\$724,900

3 Bedroom, 2.50 Bathroom, 2,523 sqft

Single Family on 0.00 Acres

Paisley, Edmonton, AB

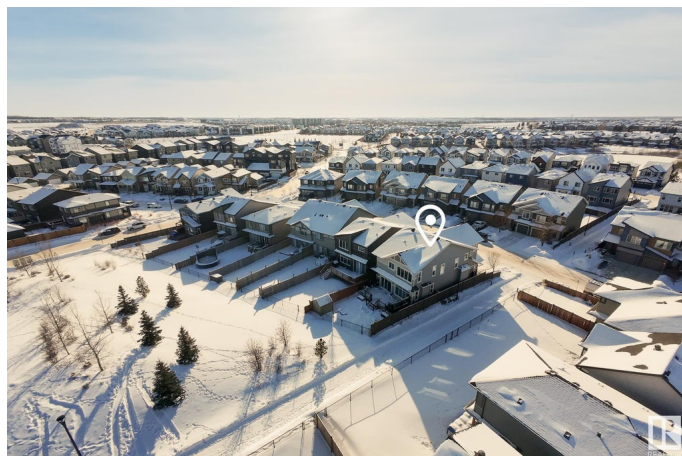
This spacious family home has only one neighbor, with a park behind and walkway on one side. Built for beauty and functionality, enjoy this well crafted home and thoughtfully landscaped lot, designed w/ 9' ceilings for a bright & open feel. The kitchen is a true showstopper, w/ gorgeous finishes a 6' x 6' island, chef inspired built in appliances, a coffee nook and a generous pantry. The spacious great room blends with the dining space, creating the perfect space for gatherings. Upstairs is a luxurious primary suite with a 5pc ensuite featuring a tiled shower, soaker tub and separate zones for each partner! Two more generous bedrooms, huge family bath, vaulted bonus room, & upstairs laundry provide the perfect balance of separate and shared spaces. The heated attached double garage offers high ceilings, a utility sink with hot and cold tap and a central drain, perfect for melting snow. This home was built with exceptional craftsmanship & meticulous attention to detail in the layout and finishes.

Built in 2016

Essential Information

MLS® # E4422765

Price \$724,900



Bedrooms	3
Bathrooms	2.50
Full Baths	2
Half Baths	1
Square Footage	2,523
Acres	0.00
Year Built	2016
Type	Single Family
Sub-Type	Detached Single Family
Style	2 Storey
Status	Active

Community Information

Address	2015 Price Landing Landing
Area	Edmonton
Subdivision	Paisley
City	Edmonton
County	ALBERTA
Province	AB
Postal Code	T6W 3P8

Amenities

Amenities	Air Conditioner, Ceiling 9 ft., Closet Organizers, Deck, Exterior Walls-2"x6", Hot Water Tankless, Low Flw/Dual Flush Toilet, Vacuum System-Roughed-In, Natural Gas BBQ Hookup, 9 ft. Basement Ceiling
Parking Spaces	4
Parking	Double Garage Attached

Interior

Interior Features	ensuite bathroom
Appliances	Air Conditioning-Central, Alarm/Security System, Dishwasher-Built-In, Hood Fan, Oven-Built-In, Oven-Microwave, Refrigerator, Storage Shed, Window Coverings, See Remarks, Stove-Countertop Inductn, Garage Heater
Heating	Forced Air-2, Natural Gas
Fireplace	Yes
Fireplaces	Direct Vent
Stories	2
Has Basement	Yes

Basement Full, Partially Finished

Exterior

Exterior Wood, Stone, Vinyl

Exterior Features Backs Onto Park/Trees, Fenced, Flat Site, Golf Nearby, Landscaped, Park/Reserve, Playground Nearby, Shopping Nearby

Roof Asphalt Shingles

Construction Wood, Stone, Vinyl

Foundation Concrete Perimeter

Additional Information

Date Listed February 25th, 2025

Days on Market 61

Zoning Zone 55

DATA IS DEEMED RELIABLE BUT IS NOT GUARANTEED ACCURATE BY THE REALTORS® ASSOCIATION OF EDMONTON. COPYRIGHT 2025 BY THE REALTORS® ASSOCIATION OF EDMONTON. ALL RIGHTS RESERVED.Trademarks are owned or controlled by the Canadian Real Estate Association (CREA) and identify real estate professionals who are members of CREA (REALTOR®, REALTORS®) and/or the quality of services they provide (MLS®, Multiple Listing Service®)

Listing information last updated on April 27th, 2025 at 4:17am MDT