

\$281,800 - 104 10153 117 Street, Edmonton

MLS® #E4425929

\$281,800

2 Bedroom, 2.00 Bathroom, 1,141 sqft
Condo / Townhouse on 0.00 Acres

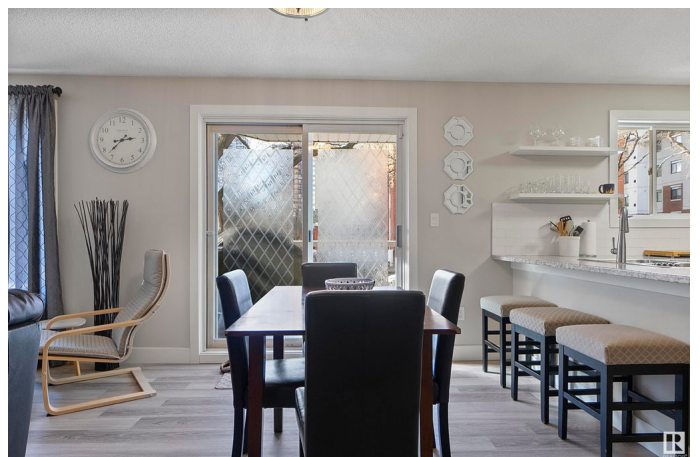
Wähkwäntäwin, Edmonton, AB

5 Stars! Conveniently located close to restaurants, downtown, the river valley, U of A and Grant McEwen. Just a half block off Jasper Avenue, you'll find this bright, spacious, updated home. 2 bedrooms, 2 bathrooms, 2 heated parking spots. This is no cookie-cutter condo. The large living room features a corner, gas fireplace. Great to gather around with friends for a special occasion, or just to 'hang out' for an evening of games and conversation. Plus, there's lots of room to spread out by utilizing the separate dining area, peninsula seating and the U-Shaped kitchen. The kitchen has newer appliances, a microwave hood fan, built-in dishwasher and loads of counter space. Oh, and there's a pantry/laundry room right off it. How convenient is that? But, if you have [or would like] a roommate, the bedrooms are in a separate wing for added privacy. The primary bedroom is huge! Well, a really good size - including the walk-in closet & ensuite. There's secure u/ground parking and a big balcony. See today!

Built in 1993

Essential Information

MLS® #	E4425929
Price	\$281,800



Bedrooms	2
Bathrooms	2.00
Full Baths	2
Square Footage	1,141
Acres	0.00
Year Built	1993
Type	Condo / Townhouse
Sub-Type	Lowrise Apartment
Style	Single Level Apartment
Status	Active

Community Information

Address	104 10153 117 Street
Area	Edmonton
Subdivision	WÃ©hkwÃ©ntÃ©win
City	Edmonton
County	ALBERTA
Province	AB
Postal Code	T5K 1X5

Amenities

Amenities	No Animal Home, No Smoking Home, Secured Parking, Security Door
Parking Spaces	2
Parking	Heated, Tandem, Underground

Interior

Interior Features	ensuite bathroom
Appliances	Dishwasher-Built-In, Garage Control, Microwave Hood Fan, Refrigerator, Stove-Electric, Window Coverings
Heating	In Floor Heat System, Natural Gas
Fireplace	Yes
Fireplaces	Corner
# of Stories	4
Stories	4
Has Basement	Yes
Basement	None, No Basement

Exterior

Exterior	Wood, Stucco
----------	--------------

Exterior Features	Landscaped, Public Transportation, Schools
Roof	Asphalt Shingles
Construction	Wood, Stucco
Foundation	Concrete Perimeter

School Information

Elementary	WIHKWENTOWIN
Middle	WESTMINSTER
High	VICTORIA

Additional Information

Date Listed	March 15th, 2025
Days on Market	44
Zoning	Zone 12
Condo Fee	\$587

DATA IS DEEMED RELIABLE BUT IS NOT GUARANTEED ACCURATE BY THE REALTORS® ASSOCIATION OF EDMONTON. COPYRIGHT 2025 BY THE REALTORS® ASSOCIATION OF EDMONTON. ALL RIGHTS RESERVED. Trademarks are owned or controlled by the Canadian Real Estate Association (CREA) and identify real estate professionals who are members of CREA (REALTOR®, REALTORS®) and/or the quality of services they provide (MLS®, Multiple Listing Service®)

Listing information last updated on April 28th, 2025 at 11:47am MDT