

\$629,900 - 900 10180 103 Street, Edmonton

MLS® #E4426460

\$629,900

2 Bedroom, 2.00 Bathroom, 1,368 sqft

Condo / Townhouse on 0.00 Acres

Downtown (Edmonton), Edmonton, AB

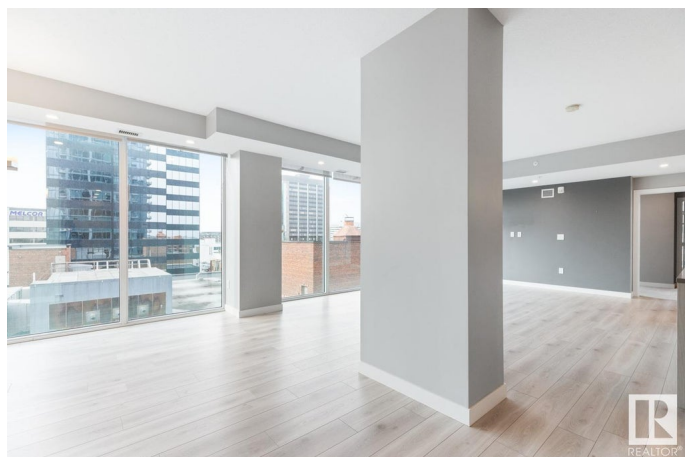
Stunning Encore Tower with Concierge service. 1368 sq ft 2 bedroom 2 full bathroom executive suite with 9 foot ceilings Enjoy the light and views from these floor to ceiling windows with blackout blinds facing mainly south, & with east & west windows offering a 180 degree views. 2 balconies. Master suite has a west facing balcony, large walk-in California closet and a five piece ensuite bathroom. There is also a second bedroom/office and a second full bathroom. Modern chef's size kitchen with quartz countertops, flat panel cabinets upgraded stainless steel appliances and entertaining extended island bar area. Separate dining area with windows on two sides. Hardwood floors In-suite Laundry. Underground titled parking stall. Enjoy the fitness room, lounge area with private cabanas indoor/outdoor fireplaces & outdoor deck area. Pet friendly. Walking distance to great Restaurants, Rogers Place, Groceries, Financial Core, Ice District, Shopping, River Valley Trails, & LRT. Garbage chute outside the door.

Built in 2020

Essential Information

MLS® # E4426460

Price \$629,900



Bedrooms	2
Bathrooms	2.00
Full Baths	2
Square Footage	1,368
Acres	0.00
Year Built	2020
Type	Condo / Townhouse
Sub-Type	Apartment High Rise
Style	Single Level Apartment
Status	Active

Community Information

Address	900 10180 103 Street
Area	Edmonton
Subdivision	Downtown (Edmonton)
City	Edmonton
County	ALBERTA
Province	AB
Postal Code	T5J 0L1

Amenities

Amenities	Air Conditioner, Ceiling 9 ft., Exercise Room, No Smoking Home, Party Room, Patio, Recreation Room/Centre, Social Rooms, Concierge Service
Parking	Underground

Interior

Interior Features	ensuite bathroom
Appliances	Dishwasher-Built-In, Garage Control, Microwave Hood Fan, Refrigerator, Stacked Washer/Dryer, Stove-Electric, Window Coverings
Heating	Heat Pump, Natural Gas
# of Stories	42
Stories	1
Has Basement	Yes
Basement	None, No Basement

Exterior

Exterior	Concrete, Brick, Metal
Exterior Features	Back Lane, Corner Lot, Paved Lane, Public Transportation, Recreation

Use, Shopping Nearby, View City, View Downtown, See Remarks

Roof	EPDM Membrane
Construction	Concrete, Brick, Metal
Foundation	Concrete Perimeter

Additional Information

Date Listed	March 19th, 2025
Days on Market	41
Zoning	Zone 12
Condo Fee	\$1,080

DATA IS DEEMED RELIABLE BUT IS NOT GUARANTEED ACCURATE BY THE REALTORS® ASSOCIATION OF EDMONTON. COPYRIGHT 2025 BY THE REALTORS® ASSOCIATION OF EDMONTON. ALL RIGHTS RESERVED. Trademarks are owned or controlled by the Canadian Real Estate Association (CREA) and identify real estate professionals who are members of CREA (REALTOR®, REALTORS®) and/or the quality of services they provide (MLS®, Multiple Listing Service®)

Listing information last updated on April 29th, 2025 at 6:47am MDT