

Courtesy Of John Rota Of Sweetly

# \$675,000 - 49 Gladstone Bend, Spruce Grove

MLS® #E4427696

## \$675,000

3 Bedroom, 2.50 Bathroom, 2,241 sqft  
Single Family on 0.00 Acres

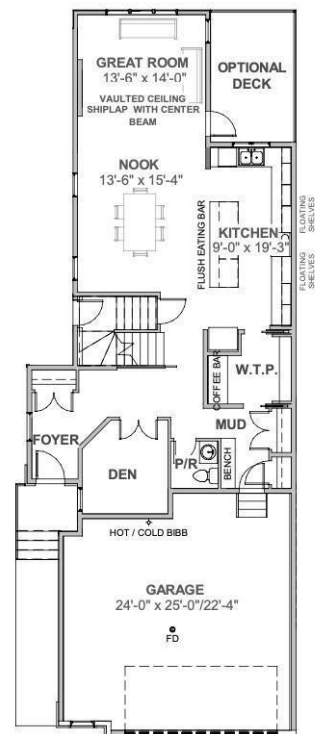
Greenbury, Spruce Grove, AB

Step into this stunning two-storey home in Greenbury, Spruce Grove. The main floor offers a welcoming living room, a dining room, a stylish kitchen, a mudroom, a den, a convenient 2-piece bathroom, and the option to add a deck for outdoor enjoyment. The upper floor boasts a spacious bonus room, a primary bedroom with a walk-in closet and a luxurious 5-piece ensuite, two additional bedrooms, a laundry room, and a 4-piece bathroom. This home also includes an attached double garage, offering ample parking and storage. This home combines style and practicality for your ideal lifestyle.

Built in 2025

### Essential Information

|                |                        |
|----------------|------------------------|
| MLS® #         | E4427696               |
| Price          | \$675,000              |
| Bedrooms       | 3                      |
| Bathrooms      | 2.50                   |
| Full Baths     | 2                      |
| Half Baths     | 1                      |
| Square Footage | 2,241                  |
| Acres          | 0.00                   |
| Year Built     | 2025                   |
| Type           | Single Family          |
| Sub-Type       | Detached Single Family |



MAIN FLOOR PLAN  
9'-1" CEILING HEIGHT

Style 2 Storey  
Status Active

### Community Information

Address 49 Gladstone Bend  
Area Spruce Grove  
Subdivision Greenbury  
City Spruce Grove  
County ALBERTA  
Province AB  
Postal Code T7X 0Z6

### Amenities

Amenities Detectors Smoke, No Animal Home, No Smoking Home  
Parking Double Garage Attached

### Interior

Interior Features ensuite bathroom  
Appliances See Remarks  
Heating Forced Air-1, Natural Gas  
Stories 2  
Has Basement Yes  
Basement Full, Unfinished

### Exterior

Exterior Wood, Vinyl  
Exterior Features Playground Nearby, Public Transportation, Schools, Shopping Nearby  
Roof Asphalt Shingles  
Construction Wood, Vinyl  
Foundation Concrete Perimeter

### Additional Information

Date Listed March 27th, 2025  
Days on Market 32  
Zoning Zone 91

DATA IS DEEMED RELIABLE BUT IS NOT GUARANTEED ACCURATE BY THE REALTORS® ASSOCIATION OF EDMONTON. COPYRIGHT 2025 BY THE REALTORS® ASSOCIATION OF EDMONTON. ALL RIGHTS RESERVED. Trademarks are owned or controlled by the Canadian Real Estate Association (CREA) and identify real estate professionals who are members of CREA (REALTOR®, REALTORS®) and/or the quality of services they provide (MLS®, Multiple Listing Service®)

Listing information last updated on April 28th, 2025 at 5:32pm MDT