

Courtesy Of Jeff D Jackson Of Bode

# \$619,900 - 7151 182 Avenue, Edmonton

MLS® #E4427770

**\$619,900**

4 Bedroom, 3.00 Bathroom, 2,172 sqft  
Single Family on 0.00 Acres

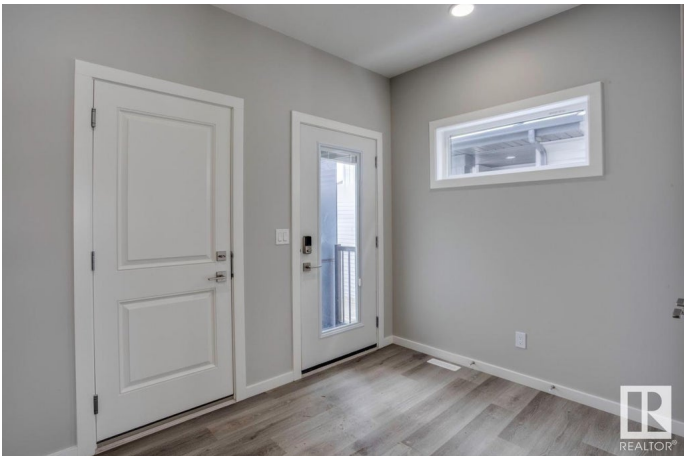
Crystallina Nera East, Edmonton, AB

Welcome to the Seville K model by Bedrock Homes—a modern 4-bedroom, 3-bathroom front drive home offering 2100+ sq ft of stylish, functional space in the desirable Crystallina community. This greenspace-backing home features an open-concept main floor (+ bedroom & full bath) with a cozy 50" LED electric fireplace, luxury vinyl plank flooring, a gourmet kitchen with 41" upper cabinets, quartz countertops. This home also comes with a SIDE ENTRY and 9' basement ceilings - perfect for potential future development! Upstairs, discover a front facing bonus room, second-floor laundry, and a primary spa-like 5pc ensuite. The LED pot lights throughout provide energy efficiency and a warm ambiance. With an oversized double front attached garage, this move-in-ready home is perfect for families looking for a blend of comfort and cutting-edge technology in a great neighborhood with easy access to local amenities!

Built in 2024

## Essential Information

MLS® #	E4427770
Price	\$619,900
Bedrooms	4
Bathrooms	3.00



Full Baths	3
Square Footage	2,172
Acres	0.00
Year Built	2024
Type	Single Family
Sub-Type	Detached Single Family
Style	2 Storey
Status	Active

### Community Information

Address	7151 182 Avenue
Area	Edmonton
Subdivision	Crystallina Nera East
City	Edmonton
County	ALBERTA
Province	AB
Postal Code	T5Z 0J1

### Amenities

Amenities	No Animal Home, No Smoking Home
Parking Spaces	4
Parking	Double Garage Attached

### Interior

Interior Features	ensuite bathroom
Appliances	None
Heating	Forced Air-1, Natural Gas
Fireplace	Yes
Fireplaces	Insert
Stories	2
Has Basement	Yes
Basement	Full, Unfinished

### Exterior

Exterior	Wood, Fiber Cement, Stone, Vinyl
Exterior Features	Backs Onto Park/Trees, Level Land, Park/Reserve, Playground Nearby, Public Transportation, Schools, Shopping Nearby
Roof	Asphalt Shingles
Construction	Wood, Fiber Cement, Stone, Vinyl

Foundation                      Concrete Perimeter

**Additional Information**

Date Listed                      March 27th, 2025

Days on Market                32

Zoning                              Zone 28

DATA IS DEEMED RELIABLE BUT IS NOT GUARANTEED ACCURATE BY THE REALTORS® ASSOCIATION OF EDMONTON. COPYRIGHT 2025 BY THE REALTORS® ASSOCIATION OF EDMONTON. ALL RIGHTS RESERVED.Trademarks are owned or controlled by the Canadian Real Estate Association (CREA) and identify real estate professionals who are members of CREA (REALTOR®, REALTORS®) and/or the quality of services they provide (MLS®, Multiple Listing Service®)

Listing information last updated on April 28th, 2025 at 11:32am MDT