

Courtesy Of Hassan Hachem Of Initia Real Estate

\$117,000 - 202 8310 Jasper Avenue, Edmonton

MLS® #E4430402

\$117,000

2 Bedroom, 1.00 Bathroom, 789 sqft

Condo / Townhouse on 0.00 Acres

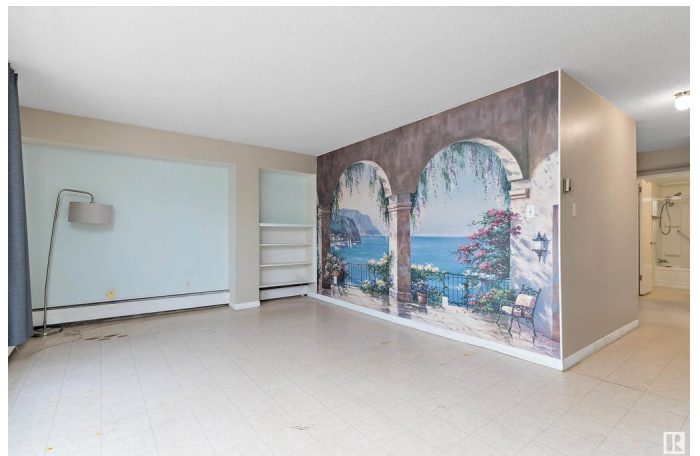
Cromdale, Edmonton, AB

Get ready to marvel at the breathtaking views of the River Valley - right from your balcony! This 2nd floor, 2-bedroom, 1-bathroom condo not only provides the unbeatable view of the riverfront, but also easy access to downtown and public transportation, making it an excellent choice for students and professionals. Perfectly situated in a prime location, this beautiful home allows you to enjoy the tranquility of nature while staying connected to the buzz of urban life. Nestled in a quiet and well maintained building, and with all utilities included in the condo fees, you'll experience both comfort and convenience in this ideal retreat. The functional and open layout of the home makes it feel spacious and move in ready. Don't miss the opportunity to own a home that combines style, location, and unbeatable views!

Built in 1968

Essential Information

| | |
|----------------|-----------|
| MLS® # | E4430402 |
| Price | \$117,000 |
| Bedrooms | 2 |
| Bathrooms | 1.00 |
| Full Baths | 1 |
| Square Footage | 789 |
| Acres | 0.00 |



| | |
|------------|------------------------|
| Year Built | 1968 |
| Type | Condo / Townhouse |
| Sub-Type | Apartment High Rise |
| Style | Single Level Apartment |
| Status | Active |

Community Information

| | |
|-------------|------------------------|
| Address | 202 8310 Jasper Avenue |
| Area | Edmonton |
| Subdivision | Cromdale |
| City | Edmonton |
| County | ALBERTA |
| Province | AB |
| Postal Code | T5H 3S3 |

Amenities

| | |
|-----------|------------------------------------|
| Amenities | Parking-Plug-Ins, Storage-In-Suite |
| Parking | Stall |

Interior

| | |
|--------------|--|
| Appliances | Hood Fan, Refrigerator, Stove-Electric, Window Coverings |
| Heating | Hot Water, Natural Gas |
| # of Stories | 6 |
| Stories | 1 |
| Has Basement | Yes |
| Basement | None, No Basement |

Exterior

| | |
|-------------------|--|
| Exterior | Concrete, Metal |
| Exterior Features | Golf Nearby, Public Transportation, River Valley View, River View, Shopping Nearby |
| Roof | Tar & Gravel |
| Construction | Concrete, Metal |
| Foundation | Concrete Perimeter |

Additional Information

| | |
|----------------|------------------|
| Date Listed | April 11th, 2025 |
| Days on Market | 15 |
| Zoning | Zone 09 |

Condo Fee \$706

DATA IS DEEMED RELIABLE BUT IS NOT GUARANTEED ACCURATE BY THE REALTORS® ASSOCIATION OF EDMONTON. COPYRIGHT 2025 BY THE REALTORS® ASSOCIATION OF EDMONTON. ALL RIGHTS RESERVED. Trademarks are owned or controlled by the Canadian Real Estate Association (CREA) and identify real estate professionals who are members of CREA (REALTOR®, REALTORS®) and/or the quality of services they provide (MLS®, Multiple Listing Service®)

Listing information last updated on April 26th, 2025 at 10:17am MDT