

## \$175,000 - 231 4309 33 Street, Stony Plain

MLS® #E4432245

**\$175,000**

2 Bedroom, 2.00 Bathroom, 806 sqft

Condo / Townhouse on 0.00 Acres

South Business Park, Stony Plain, AB

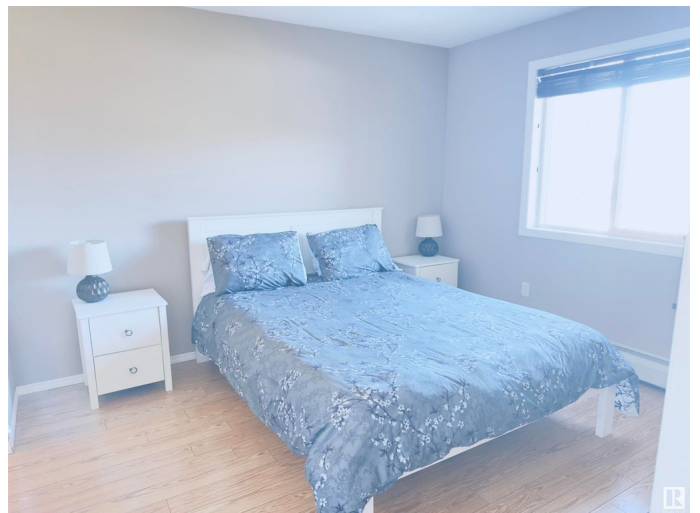
Wonderfully kept 2 bedroom, 2 bath condo unit, located walking distance the the Stony Plain hospital and shopping and restaurants. The view off the patio looks to the east park area with outstanding sunrises through the windows!! Open floor plan, eat up counter, both bedrooms are very spacious. Underground parking assigned as well as outside parking anywhere in the parking lot. Condo fees include all except power! Great Home, awesome location.

Built in 2008

### Essential Information

MLS® #	E4432245
Price	\$175,000
Bedrooms	2
Bathrooms	2.00
Full Baths	2
Square Footage	806
Acres	0.00
Year Built	2008
Type	Condo / Townhouse
Sub-Type	Lowrise Apartment
Style	Single Level Apartment
Status	Active

### Community Information



Address	231 4309 33 Street
Area	Stony Plain
Subdivision	South Business Park
City	Stony Plain
County	ALBERTA
Province	AB
Postal Code	T7Z 0C4

### **Amenities**

Amenities	Patio
Parking	Underground

### **Interior**

Interior Features	ensuite bathroom
Appliances	Dishwasher-Built-In, Dryer, Refrigerator, Stove-Electric, Washer
Heating	Fan Coil, Natural Gas
# of Stories	4
Stories	4
Has Basement	Yes
Basement	None, No Basement

### **Exterior**

Exterior	Wood, Vinyl
Exterior Features	Playground Nearby, Schools, Shopping Nearby, See Remarks
Roof	Asphalt Shingles
Construction	Wood, Vinyl
Foundation	Concrete Perimeter

### **Additional Information**

Date Listed	April 23rd, 2025
Days on Market	5
Zoning	Zone 91
Condo Fee	\$448

DATA IS DEEMED RELIABLE BUT IS NOT GUARANTEED ACCURATE BY THE REALTORS® ASSOCIATION OF EDMONTON. COPYRIGHT 2025 BY THE REALTORS® ASSOCIATION OF EDMONTON. ALL RIGHTS RESERVED. Trademarks are owned or controlled by the Canadian Real Estate Association (CREA) and identify real estate professionals who are members of CREA (REALTOR®, REALTORS®) and/or the quality of services they provide (MLS®, Multiple Listing Service®)

Listing information last updated on April 28th, 2025 at 5:02am MDT