

Courtesy Of Paddy Stewart Of Sweetly

\$195,000 - 305 12045 22 Avenue, Edmonton

MLS® #E4432576

\$195,000

2 Bedroom, 1.00 Bathroom, 700 sqft

Condo / Townhouse on 0.00 Acres

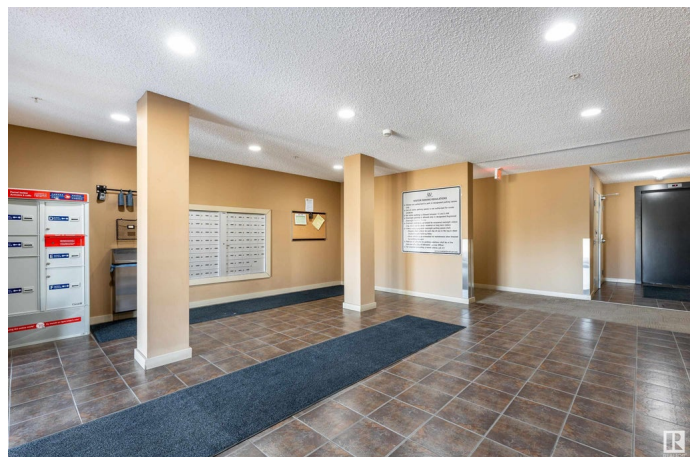
Heritage Valley Town Centre Area, Edmonton, AB

Welcome to this well-maintained 2 bed, 1 bath condo in the heart of Rutherford! Offering 699 sq ft of functional living space, this unit features a modern kitchen with stainless steel appliances, granite countertops, and a convenient pantry. The bright living room opens to a private balcony—perfect for relaxing. Enjoy a spacious primary bedroom with a walk-in closet. Includes convenient in-unit storage for added organization. Heat and water are included in the condo fees for added value. Recent upgrades include new dishwasher, new faucets, new plumbing under kitchen sink and toilet and commercial deadbolt. Comes with two parking stalls—one underground and one surface. Pets welcome! Multiple allowed, 12+ and under. Ideally located near a playground, bus stop, schools, and grocery stores, this home is perfect for first-time buyers, downsizers, or investors!

Built in 2014

Essential Information

MLS® #	E4432576
Price	\$195,000
Bedrooms	2
Bathrooms	1.00
Full Baths	1



Square Footage	700
Acres	0.00
Year Built	2014
Type	Condo / Townhouse
Sub-Type	Lowrise Apartment
Style	Single Level Apartment
Status	Active

Community Information

Address	305 12045 22 Avenue
Area	Edmonton
Subdivision	Heritage Valley Town Centre Area
City	Edmonton
County	ALBERTA
Province	AB
Postal Code	T6W 2Y2

Amenities

Amenities	See Remarks
Parking	Stall, Underground

Interior

Appliances	Dishwasher-Built-In, Dryer, Microwave Hood Fan, Refrigerator, Stove-Electric, Washer
Heating	Baseboard, Natural Gas
# of Stories	4
Stories	1
Has Basement	Yes
Basement	None, No Basement

Exterior

Exterior	Wood, Stone, Vinyl
Exterior Features	Golf Nearby, Landscaped, Playground Nearby, Public Transportation, Schools, Shopping Nearby
Roof	Asphalt Shingles
Construction	Wood, Stone, Vinyl
Foundation	Concrete Perimeter

Additional Information

Date Listed	April 24th, 2025
Days on Market	2
Zoning	Zone 55
Condo Fee	\$434

DATA IS DEEMED RELIABLE BUT IS NOT GUARANTEED ACCURATE BY THE REALTORS® ASSOCIATION OF EDMONTON. COPYRIGHT 2025 BY THE REALTORS® ASSOCIATION OF EDMONTON. ALL RIGHTS RESERVED. Trademarks are owned or controlled by the Canadian Real Estate Association (CREA) and identify real estate professionals who are members of CREA (REALTOR®, REALTORS®) and/or the quality of services they provide (MLS®, Multiple Listing Service®)

Listing information last updated on April 26th, 2025 at 6:02pm MDT