

## \$579,900 - 32 Lorraine Crescent, St. Albert

MLS® #E4432595

**\$579,900**

6 Bedroom, 3.50 Bathroom, 1,894 sqft

Single Family on 0.00 Acres

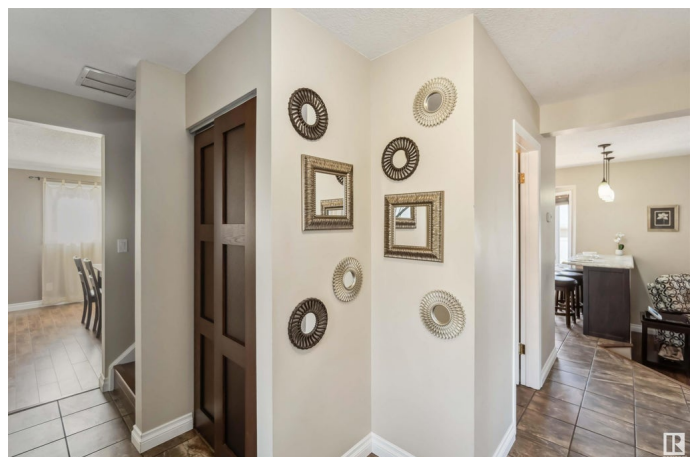
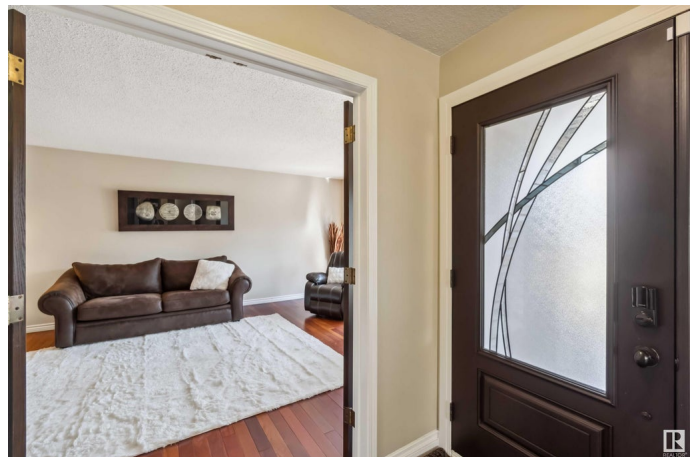
Lacombe Park, St. Albert, AB

Come home to this beautifully updated and renovated 1,910sqft, 5-BEDROOM, move-in-ready, 2-storey FAMILY HOME in Lacombe Park. The main floor features a stunning kitchen, formal dining room, massive living room, sunken family room with fireplace, powder room, and convenient laundry located next to the side entrance. Upstairs, youâ€™ll find 4 spacious bedrooms, including a serene primary suite with an ensuite bath. The fully developed basement adds serious bonus space with a sauna, a hockey-themed rec room with a wet bar, 5th bedroom, and generous storage. Situated on a corner lot in a quiet CUL-DE-SAC location, this home blends modern updates with family-friendly function, perfect for making memories. All this home needs is YOU!

Built in 1976

### Essential Information

MLS® #	E4432595
Price	\$579,900
Bedrooms	6
Bathrooms	3.50
Full Baths	3
Half Baths	1
Square Footage	1,894
Acres	0.00



Year Built	1976
Type	Single Family
Sub-Type	Detached Single Family
Style	2 Storey
Status	Active

### Community Information

Address	32 Lorraine Crescent
Area	St. Albert
Subdivision	Lacombe Park
City	St. Albert
County	ALBERTA
Province	AB
Postal Code	T8N 2R3

### Amenities

Amenities	Air Conditioner, Deck, Detectors Smoke, Gazebo, Recreation Room/Centre, Sauna; Swirlpool; Steam, Wet Bar
Parking	Double Garage Attached, Heated, Insulated, RV Parking

### Interior

Interior Features	ensuite bathroom
Appliances	Air Conditioning-Central, Dishwasher-Built-In, Dryer, Garage Control, Garage Opener, Microwave Hood Fan, Refrigerator, Stove-Electric, Washer, Window Coverings
Heating	Forced Air-1, Natural Gas
Stories	3
Has Basement	Yes
Basement	Full, Finished

### Exterior

Exterior	Wood, Brick, Metal
Exterior Features	Corner Lot, Cul-De-Sac, Fenced, Flat Site, Landscaped, Schools, Treed Lot
Roof	Asphalt Shingles
Construction	Wood, Brick, Metal
Foundation	Concrete Perimeter

### School Information

Elementary	Ronald Harvey Elementary
------------	--------------------------

Middle	William D Cuts School
High	Bellerose Composite High

### **Additional Information**

Date Listed	April 24th, 2025
Days on Market	4
Zoning	Zone 24

DATA IS DEEMED RELIABLE BUT IS NOT GUARANTEED ACCURATE BY THE REALTORS® ASSOCIATION OF EDMONTON. COPYRIGHT 2025 BY THE REALTORS® ASSOCIATION OF EDMONTON. ALL RIGHTS RESERVED. Trademarks are owned or controlled by the Canadian Real Estate Association (CREA) and identify real estate professionals who are members of CREA (REALTOR®, REALTORS®) and/or the quality of services they provide (MLS®, Multiple Listing Service®)

Listing information last updated on April 28th, 2025 at 3:17am MDT