

\$500,000 - 9351 222 Street, Edmonton

MLS® #E4433997

\$500,000

3 Bedroom, 2.50 Bathroom, 1,574 sqft

Single Family on 0.00 Acres

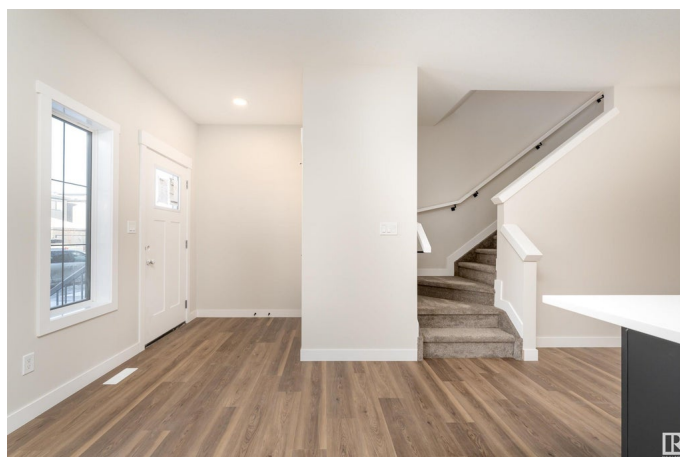
Secord, Edmonton, AB

This 2-storey home located in Secord, Edmonton. With 1,511 sq. ft. of living space, the main floor welcomes you with a cozy living room, a bright dining area, a well-equipped kitchen featuring a pantry, a practical mudroom, and a 2pc bathroom. Upstairs, unwind in the bonus room or retreat to the primary bedroom with its own 3pc ensuite and walk-in closet. Two additional bedrooms and a 4pc bathroom complete the upper level, making this home a warm and inviting space for your family. 200AMP service adds convenience and practicality to this home.

Built in 2025

Essential Information

MLS® #	E4433997
Price	\$500,000
Bedrooms	3
Bathrooms	2.50
Full Baths	2
Half Baths	1
Square Footage	1,574
Acres	0.00
Year Built	2025
Type	Single Family
Sub-Type	Detached Single Family
Style	2 Storey



Status	Active
--------	--------

Community Information

Address	9351 222 Street
Area	Edmonton
Subdivision	Secord
City	Edmonton
County	ALBERTA
Province	AB
Postal Code	T5T 7T1

Amenities

Amenities	Detectors Smoke, No Animal Home, No Smoking Home
Parking	No Garage

Interior

Interior Features	ensuite bathroom
Appliances	See Remarks
Heating	Forced Air-1, Natural Gas
Stories	2
Has Basement	Yes
Basement	Full, Unfinished

Exterior

Exterior	Wood, Vinyl
Exterior Features	Playground Nearby, Schools, Shopping Nearby
Roof	Asphalt Shingles
Construction	Wood, Vinyl
Foundation	Concrete Perimeter

Additional Information

Date Listed	May 1st, 2025
Days on Market	44
Zoning	Zone 58

DATA IS DEEMED RELIABLE BUT IS NOT GUARANTEED ACCURATE BY THE REALTORS® ASSOCIATION OF EDMONTON. COPYRIGHT 2025 BY THE REALTORS® ASSOCIATION OF EDMONTON. ALL RIGHTS RESERVED.Trademarks are owned or controlled by the Canadian Real Estate Association (CREA) and identify real estate professionals who are members of CREA (REALTOR®, REALTORS®) and/or the quality of services they provide (MLS®, Multiple Listing Service®)

Listing information last updated on June 14th, 2025 at 8:47pm MDT