

\$625,000 - 9432 148 Street, Edmonton

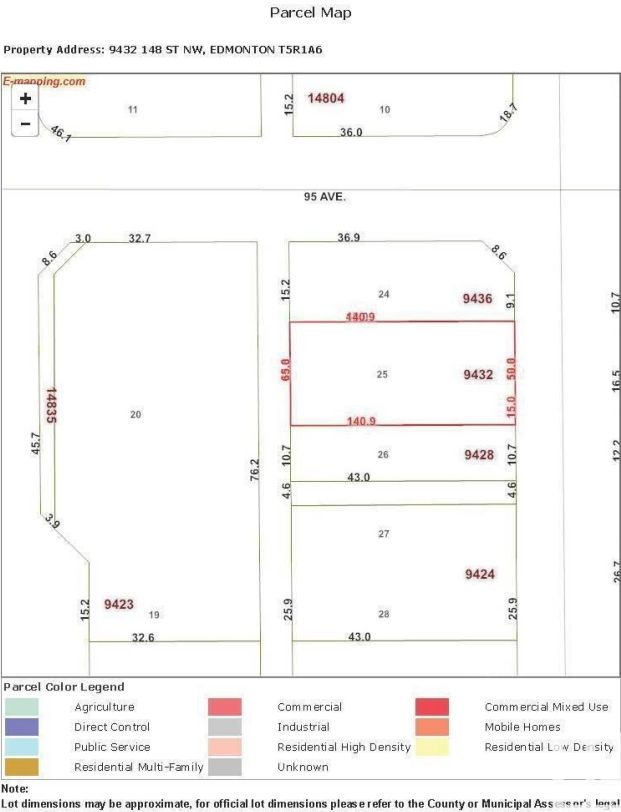
MLS® #E4434090

\$625,000

4 Bedroom, 2.00 Bathroom, 1,133 sqft
Single Family on 0.00 Acres

Parkview, Edmonton, AB

Prime opportunity in sought-after Parkview! This exceptional 65' x 140' (851 m²) lot is ideally located across from Mackenzie Ravine. With RS zoning and a unique position at the ravine's end, the property offers potential for subdivision, infill, or multi-family development. The existing home offers spacious living room and upgraded kitchen, 3 bedrooms on the main floor, a finished basement, and a double detached garage with alley access. Fully finished basement! Features include vinyl plank flooring, built in closet shelving, jacuzzi tub, windows replaced (2010), upgraded bathroom, basement walls all re-insulated and sewer line replaced 2-3 years ago. Parkview is known for its mature tree-lined streets, generous lot sizes, and ravine views and access just minutes from downtown. Families will appreciate nearby Parkview School (K-9) and St. Rose Junior High, along with convenient access to local shops, parks, and the expansive river valley trail system. A perfect blend of urban living and natural beauty.



Built in 1955

Essential Information

MLS® # E4434090
Price \$625,000

Bedrooms	4
Bathrooms	2.00
Full Baths	2
Square Footage	1,133
Acres	0.00
Year Built	1955
Type	Single Family
Sub-Type	Detached Single Family
Style	Bungalow
Status	Active

Community Information

Address	9432 148 Street
Area	Edmonton
Subdivision	Parkview
City	Edmonton
County	ALBERTA
Province	AB
Postal Code	T5R 1A6

Amenities

Amenities	See Remarks
Parking Spaces	4
Parking	Double Garage Detached

Interior

Appliances	Dishwasher-Built-In, Dryer, Freezer, Garage Control, Garage Opener, Refrigerator, Stove-Electric, Washer
Heating	Forced Air-1, Natural Gas
Stories	2
Has Basement	Yes
Basement	Full, Finished

Exterior

Exterior	Wood, Stucco
Exterior Features	Back Lane, Fenced, Landscaped, Schools, Shopping Nearby
Lot Description	65 x 140
Roof	Asphalt Shingles
Construction	Wood, Stucco

Foundation Concrete Perimeter

Additional Information

Date Listed May 2nd, 2025
Days on Market 45
Zoning Zone 10



DATA IS DEEMED RELIABLE BUT IS NOT GUARANTEED ACCURATE BY THE REALTORS® ASSOCIATION OF EDMONTON. COPYRIGHT 2025 BY THE REALTORS® ASSOCIATION OF EDMONTON. ALL RIGHTS RESERVED.Trademarks are owned or controlled by the Canadian Real Estate Association (CREA) and identify real estate professionals who are members of CREA (REALTOR®, REALTORS®) and/or the quality of services they provide (MLS®, Multiple Listing Service®)
Listing information last updated on June 15th, 2025 at 10:47pm MDT