

\$604,900 - 11923 123 Street, Edmonton

MLS® #E4435124

\$604,900

6 Bedroom, 4.00 Bathroom, 1,755 sqft
Single Family on 0.00 Acres

Prince Charles, Edmonton, AB

This brand-new, 2-storey half duplex features a modern open-concept living area with quartz countertops and a main-floor bedroom with a 3-piece bathroom. Upstairs, you'll find three bedrooms, including a Primary with an ensuite and walk-in closet, plus a laundry room and a 4-piece bathroom. The property also includes a 2-bedroom legal suite and a double detached garage. *Note that the property is currently still under construction.

Built in 2025

Essential Information

MLS® #	E4435124
Price	\$604,900
Bedrooms	6
Bathrooms	4.00
Full Baths	4
Square Footage	1,755
Acres	0.00
Year Built	2025
Type	Single Family
Sub-Type	Half Duplex
Style	2 Storey
Status	Active

Community Information

Address 11923 123 Street



Area Edmonton
Subdivision Prince Charles
City Edmonton
County ALBERTA
Province AB
Postal Code T5L 0G9

Amenities

Amenities Carbon Monoxide Detectors, Detectors Smoke, Hot Water, Smoking Home, Smart/Programmable

Parking Double Garage Detached

Interior

Interior Features ensuite bathroom

Appliances Garage Control, Garage Opener

Heating Forced Air-2, Natural Gas

Stories 3

Has Suite Yes

Has Basement Yes

Basement Full, Finished

Exterior

Exterior Wood, Stone, Vinyl

Exterior Features Back Lane, Landscaped, Fenced, Schools, Shopping Nearby

Roof Asphalt Shingles

Construction Wood, Stone, Vinyl

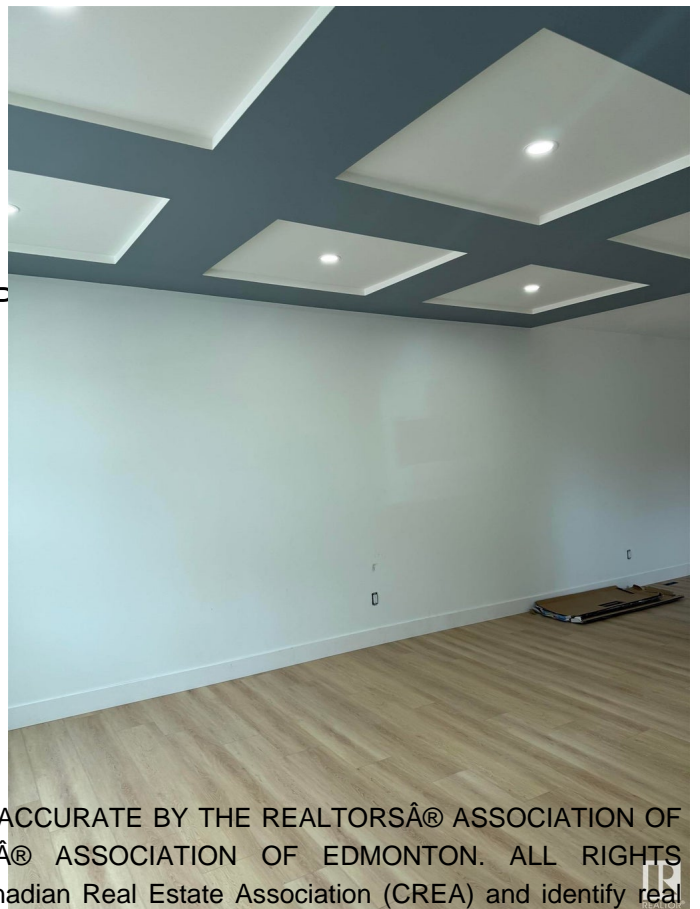
Foundation Concrete Perimeter

Additional Information

Date Listed May 8th, 2025

Days on Market 35

Zoning Zone 04



DATA IS DEEMED RELIABLE BUT IS NOT GUARANTEED ACCURATE BY THE REALTORS® ASSOCIATION OF EDMONTON. COPYRIGHT 2025 BY THE REALTORS® ASSOCIATION OF EDMONTON. ALL RIGHTS RESERVED. Trademarks are owned or controlled by the Canadian Real Estate Association (CREA) and identify real estate professionals who are members of CREA (REALTOR®, REALTORS®) and/or the quality of services they provide (MLS®, Multiple Listing Service®)

Listing information last updated on June 12th, 2025 at 4:17am MDT