

\$160,000 - 306 9816 112 Street, Edmonton

MLS® #E4435555

\$160,000

1 Bedroom, 1.00 Bathroom, 683 sqft

Condo / Townhouse on 0.00 Acres

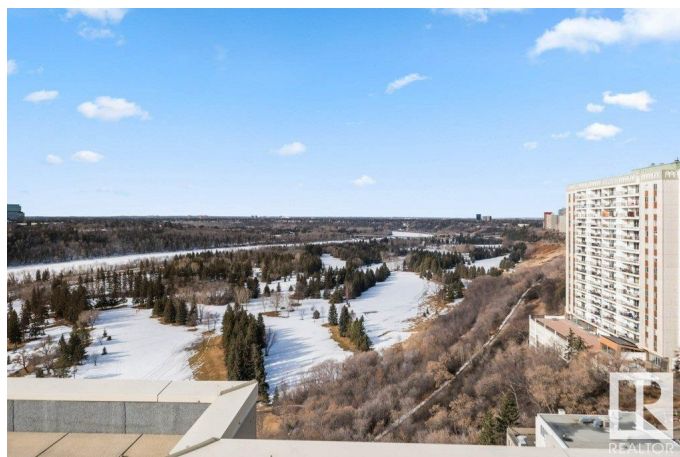
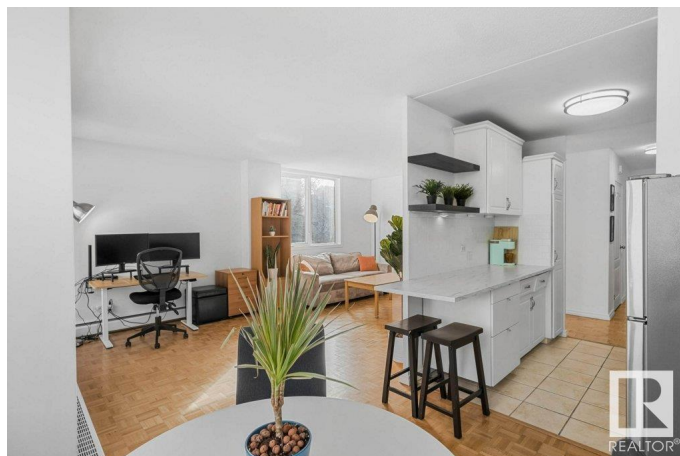
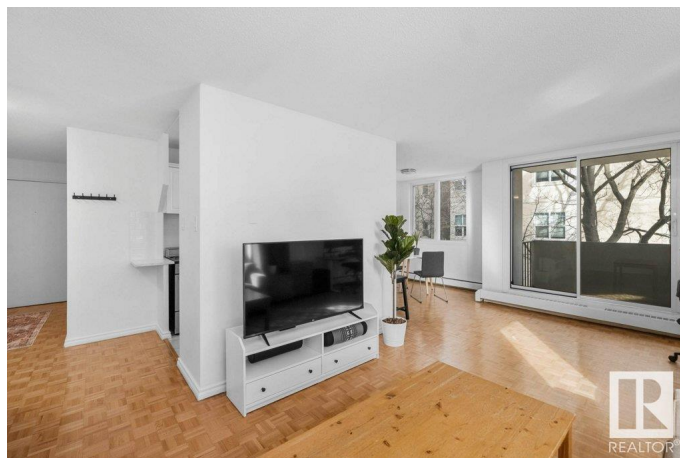
Wåhkwåntåwin, Edmonton, AB

Discover modern living in downtown Edmonton with this 1-bedroom corner unit, offering stunning river valley views. Nestled in a quiet, concrete building, it features lots of windows for ample light and breathtaking sights. The modern kitchen, stylish bathroom, and generous storage space ensure comfort and convenience. Enjoy access to a shared rooftop terrace with panoramic city and valley views, secure covered parking, and proximity to the LRT for easy commuting. This prime location is ideal for experiencing downtown's vibrant lifestyle. A unique opportunity to embrace urban living at its finest.

Built in 1963

Essential Information

MLS® #	E4435555
Price	\$160,000
Bedrooms	1
Bathrooms	1.00
Full Baths	1
Square Footage	683
Acres	0.00
Year Built	1963
Type	Condo / Townhouse
Sub-Type	Apartment High Rise
Style	Single Level Apartment



Status	Active
--------	--------

Community Information

Address	306 9816 112 Street
Area	Edmonton
Subdivision	W&hkw&nt&win
City	Edmonton
County	ALBERTA
Province	AB
Postal Code	T5K 1L5

Amenities

Amenities	Detectors Smoke, No Animal Home, No Smoking Home, Party Room, Secured Parking, Security Door, Storage-In-Suite, Television Connection
Parking	Parkade, Stall

Interior

Appliances	Refrigerator, Stove-Electric
Heating	Hot Water, Natural Gas
# of Stories	14
Stories	1
Has Basement	Yes
Basement	None, No Basement

Exterior

Exterior	Concrete
Exterior Features	Backs Onto Park/Trees, Golf Nearby, Landscaped, Playground Nearby, Public Transportation, Schools, Shopping Nearby, View City
Roof	Tar & Gravel
Construction	Concrete
Foundation	Concrete Perimeter

Additional Information

Date Listed	May 9th, 2025
Days on Market	64
Zoning	Zone 12
Condo Fee	\$512

DATA IS DEEMED RELIABLE BUT IS NOT GUARANTEED ACCURATE BY THE REALTORS® ASSOCIATION OF EDMONTON. COPYRIGHT 2025 BY THE REALTORS® ASSOCIATION OF EDMONTON. ALL RIGHTS RESERVED. Trademarks are owned or controlled by the Canadian Real Estate Association (CREA) and identify real

estate professionals who are members of CREA (REALTOR®®, REALTORS®®) and/or the quality of services they provide (MLS®®, Multiple Listing Service®®)

Listing information last updated on July 12th, 2025 at 12:32am MDT