

\$279,900 - 8730 82 Avenue, Edmonton

MLS® #E4436118

\$279,900

2 Bedroom, 2.00 Bathroom, 974 sqft

Condo / Townhouse on 0.00 Acres

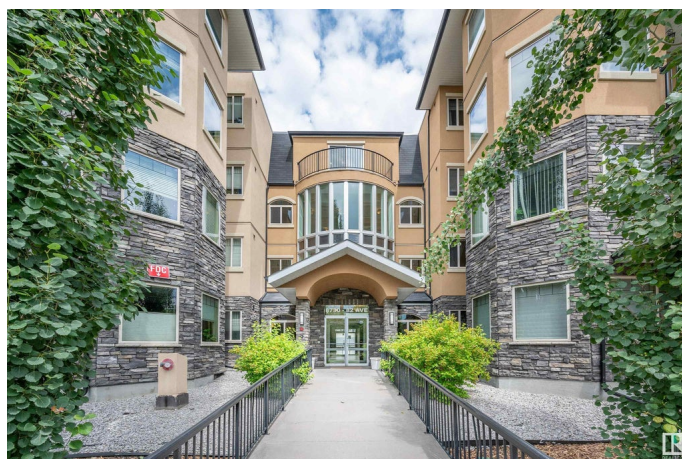
Bonnie Doon, Edmonton, AB

This 3rd floor condo on Whyte Avenue is only a 20 minute walk to the U of A! This is not your typical apartment. This one offers a generous front entry way with large storage closet and in suite laundry. Perfect little dining area with enough space for a large table. The entire level of this place has gorgeous windows throughout perfect for the green thumb. You also get to enjoy a nice large deck to relax and unwind in the evening or coffee in the morning. The master bedroom has a very large walk-in closet that leads to a good sized 4 piece ensuite. The other 4 piece bathroom is centrally located next to the second great sized bedroom with closet and nice window with a view. Perfect sized living space and the cutest little kitchen set up, complete with island, stainless steel appliances and tons of cupboard space. You have to see this one before it's gone!

Built in 2009

Essential Information

MLS® #	E4436118
Price	\$279,900
Bedrooms	2
Bathrooms	2.00
Full Baths	2
Square Footage	974



Acres	0.00
Year Built	2009
Type	Condo / Townhouse
Sub-Type	Lowrise Apartment
Style	Single Level Apartment
Status	Active

Community Information

Address	8730 82 Avenue
Area	Edmonton
Subdivision	Bonnie Doon
City	Edmonton
County	ALBERTA
Province	AB
Postal Code	T6C 0Z1

Amenities

Amenities	No Smoking Home
Parking	Underground

Interior

Interior Features	ensuite bathroom
Appliances	Dishwasher-Built-In, Dryer, Refrigerator, Stove-Electric, Washer, Window Coverings
Heating	Hot Water, Natural Gas
# of Stories	4
Stories	1
Has Basement	Yes
Basement	None, No Basement

Exterior

Exterior	Wood, Stucco
Exterior Features	Back Lane, Low Maintenance Landscape, Public Transportation, Schools, Shopping Nearby
Roof	Asphalt Shingles
Construction	Wood, Stucco
Foundation	Concrete Perimeter

Additional Information

Date Listed	May 13th, 2025
Days on Market	33
Zoning	Zone 18
Condo Fee	\$507

DATA IS DEEMED RELIABLE BUT IS NOT GUARANTEED ACCURATE BY THE REALTORS® ASSOCIATION OF EDMONTON. COPYRIGHT 2025 BY THE REALTORS® ASSOCIATION OF EDMONTON. ALL RIGHTS RESERVED. Trademarks are owned or controlled by the Canadian Real Estate Association (CREA) and identify real estate professionals who are members of CREA (REALTOR®, REALTORS®) and/or the quality of services they provide (MLS®, Multiple Listing Service®)

Listing information last updated on June 15th, 2025 at 1:47am MDT