

\$535,000 - 2111 160 Street, Edmonton

MLS® #E4437974

\$535,000

3 Bedroom, 2.50 Bathroom, 1,674 sqft

Single Family on 0.00 Acres

Glenridding Ravine, Edmonton, AB

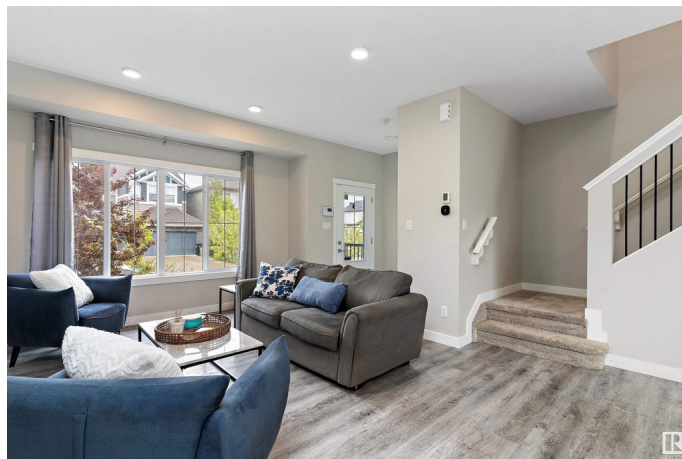
Welcome to this beautiful modern former Showhome in the desirable Glenridding Ravine community. Featuring 9â€™™ ceilings and a bright open-concept layout, this air-conditioned property offers the perfect blend of modern style and everyday comfort. The heart of the home is the chef-inspired kitchen, featuring built-in stainless steel appliances, gas cooktop, quartz countertops, and an oversized islandâ€”ideal for entertaining and family gatherings. Upstairs, youâ€™™ll find 3 spacious bedrooms, a convenient laundry room, and a luxurious primary suite complete with a large walk-in closet and a 5-piece ensuite featuring dual sinks, a soaker tub, and a separate shower. Step outside to a fully landscaped and fenced backyard, perfect for relaxing or hosting guests. A spacious double detached garage adds convenience and extra storage. This move-in ready home checks all the boxesâ€”luxury finishes, thoughtful design, and a prime location in a family-friendly neighborhood.

Built in 2018

Essential Information

MLS® # E4437974

Price \$535,000



Bedrooms	3
Bathrooms	2.50
Full Baths	2
Half Baths	1
Square Footage	1,674
Acres	0.00
Year Built	2018
Type	Single Family
Sub-Type	Detached Single Family
Style	2 Storey
Status	Active

Community Information

Address	2111 160 Street
Area	Edmonton
Subdivision	Glenridding Ravine
City	Edmonton
County	ALBERTA
Province	AB
Postal Code	T6W 4E5

Amenities

Amenities	Air Conditioner, Ceiling 9 ft., Deck, Detectors Smoke, No Smoking Home
Parking	Double Garage Detached

Interior

Interior Features	ensuite bathroom
Appliances	Air Conditioning-Central, Dishwasher-Built-In, Dryer, Garage Control, Garage Opener, Hood Fan, Oven-Built-In, Oven-Microwave, Refrigerator, Stove-Countertop Gas, Washer
Heating	Forced Air-1, Natural Gas
Fireplace	Yes
Fireplaces	Tile Surround
Stories	2
Has Basement	Yes
Basement	Full, Unfinished

Exterior

Exterior	Wood, Stone, Vinyl
----------	--------------------

Exterior Features	Airport Nearby, Back Lane, Fenced, Flat Site, Golf Nearby, Landscaped, Playground Nearby, Shopping Nearby
Roof	Asphalt Shingles
Construction	Wood, Stone, Vinyl
Foundation	Concrete Perimeter

Additional Information

Date Listed	May 22nd, 2025
Days on Market	24
Zoning	Zone 56

DATA IS DEEMED RELIABLE BUT IS NOT GUARANTEED ACCURATE BY THE REALTORS® ASSOCIATION OF EDMONTON. COPYRIGHT 2025 BY THE REALTORS® ASSOCIATION OF EDMONTON. ALL RIGHTS RESERVED.Trademarks are owned or controlled by the Canadian Real Estate Association (CREA) and identify real estate professionals who are members of CREA (REALTOR®, REALTORS®) and/or the quality of services they provide (MLS®, Multiple Listing Service®)

Listing information last updated on June 15th, 2025 at 2:02pm MDT