

## \$242,000 - 402 10528 77 Avenue, Edmonton

MLS® #E4439122

**\$242,000**

2 Bedroom, 2.00 Bathroom, 962 sqft

Condo / Townhouse on 0.00 Acres

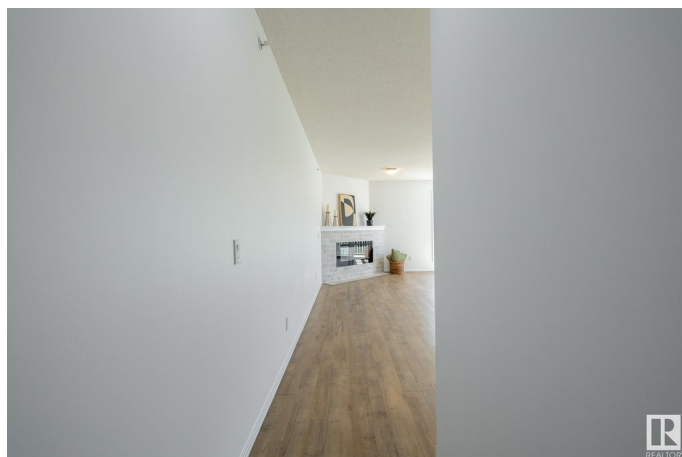
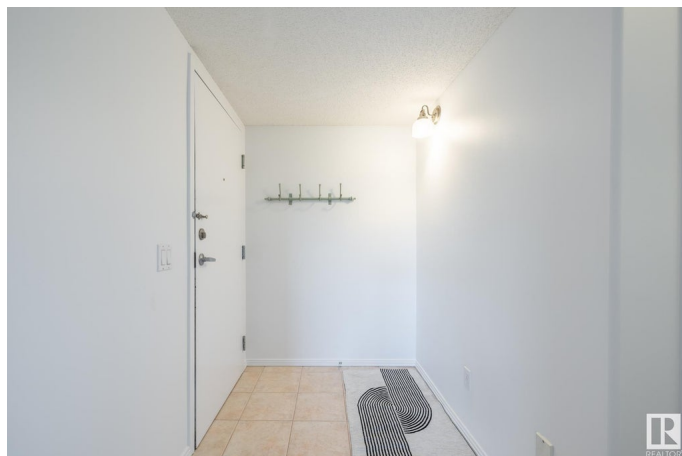
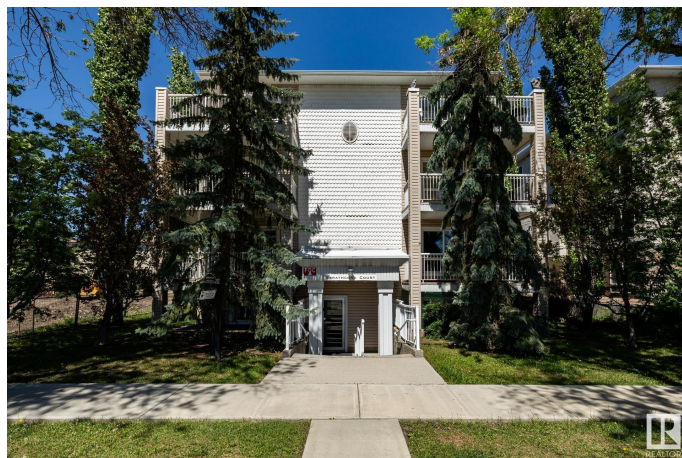
Queen Alexandra, Edmonton, AB

Top-Floor Corner Unit with Park Views + Tons of Natural Light! Bright and updated 2 bed, 2 bath corner unit with southwest exposure and a wraparound balconyâ€”perfect for morning coffee or sunset hangs. Located across from a park and close to Whyte Ave, U of A, hospital, and transit. The open layout feels spacious with fresh paint, updated white cabinets, and laminate flooring throughout (tile in kitchen/baths). Large windows let in great natural light, and thereâ€™s a cozy electric fireplace in the living area. The kitchen has a window over the sink, and thereâ€™s in-suite laundry for added convenience. The primary bedroom has 2 closets and a full ensuite. Second bathroom is great for guests or roommates. Includes: A/C, all appliances, covered parking, and extra storage in a quiet 18+ building. Perfect for young professionals or students wanting a clean, low-maintenance space in a prime location! 5 min walk to Whyte Ave.

Built in 2000

### Essential Information

MLS® #	E4439122
Price	\$242,000
Bedrooms	2
Bathrooms	2.00



Full Baths	2
Square Footage	962
Acres	0.00
Year Built	2000
Type	Condo / Townhouse
Sub-Type	Lowrise Apartment
Style	Single Level Apartment
Status	Active

### Community Information

Address	402 10528 77 Avenue
Area	Edmonton
Subdivision	Queen Alexandra
City	Edmonton
County	ALBERTA
Province	AB
Postal Code	T6E 1N1

### Amenities

Amenities	Air Conditioner, Deck, Intercom, Security Door, Storage-Locker Room
Parking	Stall

### Interior

Interior Features	ensuite bathroom
Appliances	Air Conditioning-Central, Dishwasher-Built-In, Garburator, Microwave Hood Fan, Refrigerator, Stacked Washer/Dryer, Stove-Electric
Heating	Forced Air-1, Natural Gas
# of Stories	4
Stories	1
Has Basement	Yes
Basement	None, No Basement

### Exterior

Exterior	Wood, Vinyl
Exterior Features	Playground Nearby, Public Transportation, Schools, Shopping Nearby
Roof	Asphalt Shingles
Construction	Wood, Vinyl
Foundation	Concrete Perimeter

### Additional Information

Date Listed	May 29th, 2025
Days on Market	23
Zoning	Zone 15
Condo Fee	\$563

DATA IS DEEMED RELIABLE BUT IS NOT GUARANTEED ACCURATE BY THE REALTORS® ASSOCIATION OF EDMONTON. COPYRIGHT 2025 BY THE REALTORS® ASSOCIATION OF EDMONTON. ALL RIGHTS RESERVED. Trademarks are owned or controlled by the Canadian Real Estate Association (CREA) and identify real estate professionals who are members of CREA (REALTOR®, REALTORS®) and/or the quality of services they provide (MLS®, Multiple Listing Service®)

Listing information last updated on June 21st, 2025 at 9:17pm MDT