

## \$478,500 - 8507 8 Avenue, Edmonton

MLS® #E4439483

**\$478,500**

3 Bedroom, 3.00 Bathroom, 1,326 sqft

Single Family on 0.00 Acres

Ellerslie, Edmonton, AB

Custom Built Park Homes. Over 1900 square ft of development. Very nice backyard with water feature and deck and awning and patio stones. Double attached garage. Close to all amenities. Basement has 2 access's from main floor

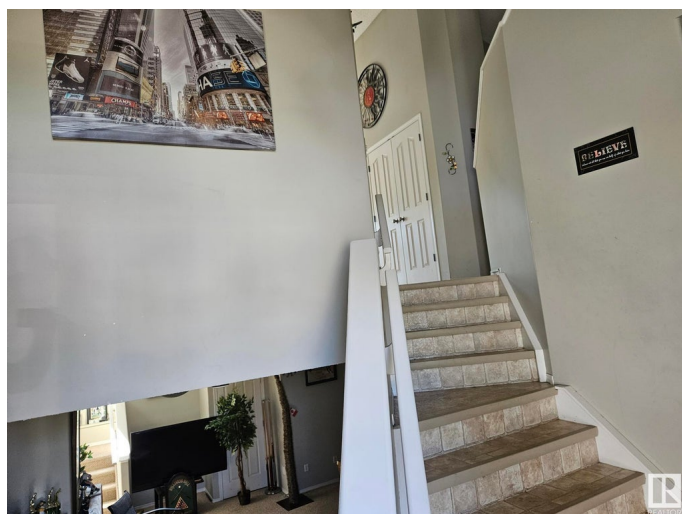
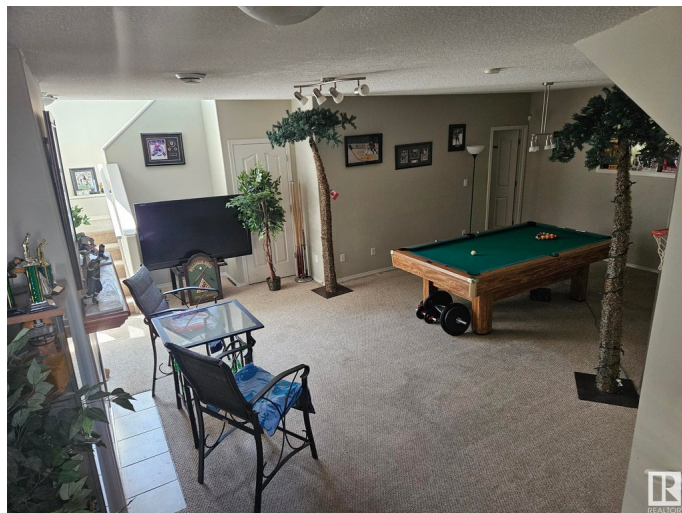
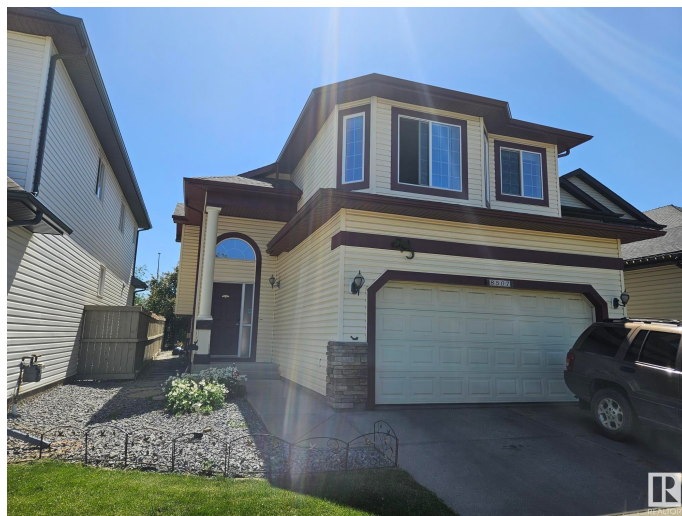
Built in 2004

### Essential Information

MLS® #	E4439483
Price	\$478,500
Bedrooms	3
Bathrooms	3.00
Full Baths	3
Square Footage	1,326
Acres	0.00
Year Built	2004
Type	Single Family
Sub-Type	Detached Single Family
Style	Bi-Level
Status	Active

### Community Information

Address	8507 8 Avenue
Area	Edmonton
Subdivision	Ellerslie
City	Edmonton



County	ALBERTA
Province	AB
Postal Code	T6X 1J3

### Amenities

Amenities	Deck
Parking Spaces	4
Parking	Double Garage Attached

### Interior

Interior Features	ensuite bathroom
Appliances	Dishwasher-Built-In, Dryer, Garage Control, Garage Opener, Hood Fan, Microwave Hood Fan, Refrigerator, Stove-Electric, Washer, Window Coverings, Garage Heater
Heating	Forced Air-1, Natural Gas
Fireplace	Yes
Fireplaces	Heatilator/Fan, Insert
Stories	3
Has Basement	Yes
Basement	Full, Finished

### Exterior

Exterior	Wood, Brick, Vinyl
Exterior Features	Fenced, Flat Site, Landscaped
Roof	Asphalt Shingles
Construction	Wood, Brick, Vinyl
Foundation	Concrete Perimeter

### Additional Information

Date Listed	May 30th, 2025
Days on Market	16
Zoning	Zone 53

DATA IS DEEMED RELIABLE BUT IS NOT GUARANTEED ACCURATE BY THE REALTORS® ASSOCIATION OF EDMONTON. COPYRIGHT 2025 BY THE REALTORS® ASSOCIATION OF EDMONTON. ALL RIGHTS RESERVED. Trademarks are owned or controlled by the Canadian Real Estate Association (CREA) and identify real estate professionals who are members of CREA (REALTOR®, REALTORS®) and/or the quality of services they provide (MLS®, Multiple Listing Service®)

Listing information last updated on June 15th, 2025 at 11:32am MDT