

Courtesy Of Carolyn N Knispel Of RE/MAX River City

# \$154,900 - 102 10810 86 Avenue, Edmonton

MLS® #E4439901

**\$154,900**

1 Bedroom, 1.00 Bathroom, 652 sqft  
Condo / Townhouse on 0.00 Acres

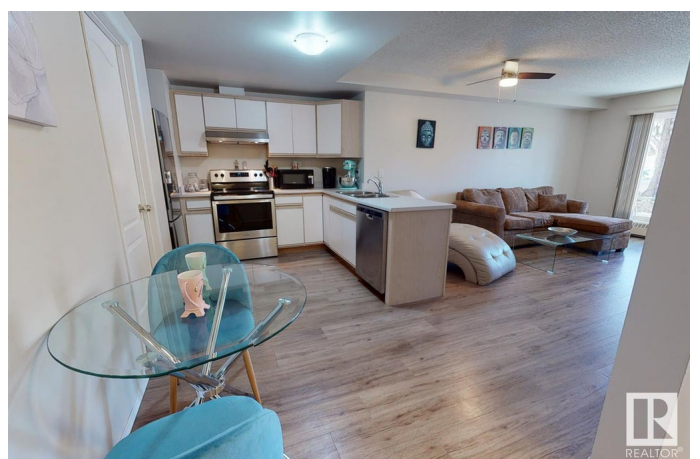
Garneau, Edmonton, AB

**GORGEOUS! MODERN!** Beautiful and completely renovated executive 1 bedroom condo in the heart of Garneau, walking distance to the U of A, steps from the Strathcona market and river valley. Feels like home immediately with it's large entrance and stunning vinyl flooring throughout. Designer colors and has open spacious floorplan. Great kitchen w/ loads of cabinet and countertops, highend stainless appliances and stepin pantry/laundry room for convenient storage. Cute eating nook opens to an oversized living area that could easily double with additional dining space. Off the living room steps onto a good sized patio which is surrounded with trees and hedges for privacy. Massive kingsized bedroom is bright with oversized windows and large enough for home office/study. Walkin laundry room/pantry conveniently off the kitchen. Excellent complex on quaint quiet street, walking distance to Whyte Ave, coffee shops, trails, UofA & LRT. Perfect for working professionals, graduate student and empty nesters.

Built in 1992

## Essential Information

MLS® #	E4439901
Price	\$154,900



Bedrooms	1
Bathrooms	1.00
Full Baths	1
Square Footage	652
Acres	0.00
Year Built	1992
Type	Condo / Townhouse
Sub-Type	Lowrise Apartment
Style	Single Level Apartment
Status	Active

### **Community Information**

Address	102 10810 86 Avenue
Area	Edmonton
Subdivision	Garneau
City	Edmonton
County	ALBERTA
Province	AB
Postal Code	T6E 2N2

### **Amenities**

Amenities	No Animal Home, No Smoking Home, Parking-Visitor, Patio, Security Door, Storage-In-Suite, Television Connection
Parking Spaces	1
Parking	Stall

### **Interior**

Appliances	Dishwasher-Built-In, Dryer, Refrigerator, Stove-Electric, Washer, Window Coverings
Heating	Hot Water, Natural Gas
# of Stories	4
Stories	1
Has Basement	Yes
Basement	None, No Basement

### **Exterior**

Exterior	Wood, Vinyl
Exterior Features	Flat Site, Fruit Trees/Shrubs, Golf Nearby, Landscaped, Paved Lane, Public Transportation, Shopping Nearby, See Remarks

Roof	Asphalt Shingles
Construction	Wood, Vinyl
Foundation	Concrete Perimeter

### **Additional Information**

Date Listed	June 2nd, 2025
Days on Market	18
Zoning	Zone 15
Condo Fee	\$484

DATA IS DEEMED RELIABLE BUT IS NOT GUARANTEED ACCURATE BY THE REALTORS® ASSOCIATION OF EDMONTON. COPYRIGHT 2025 BY THE REALTORS® ASSOCIATION OF EDMONTON. ALL RIGHTS RESERVED. Trademarks are owned or controlled by the Canadian Real Estate Association (CREA) and identify real estate professionals who are members of CREA (REALTOR®, REALTORS®) and/or the quality of services they provide (MLS®, Multiple Listing Service®)

Listing information last updated on June 20th, 2025 at 5:33pm MDT