

\$699,900 - 11511 24 Avenue, Edmonton

MLS® #E4440133

\$699,900

4 Bedroom, 3.5 Bathroom, 1,852 sqft

Single Family on 0.00 Acres

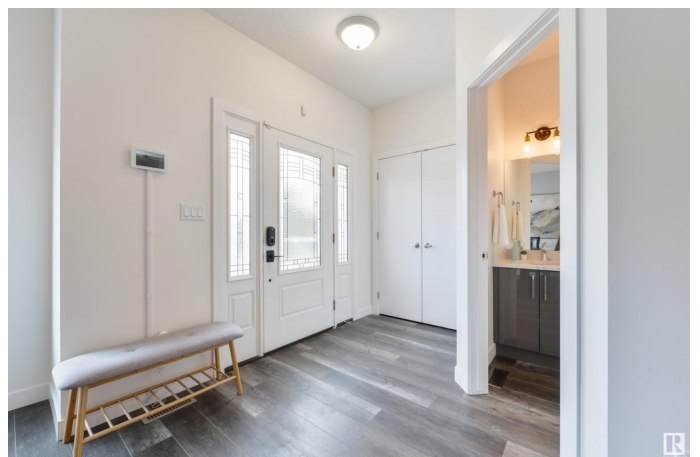
Blue Quill, Edmonton, AB

This thoughtfully designed modern home in Blue Quill blends clean lines with timeless finishes. Offering 4 bedrooms, 3.5 bathrooms, and a heated double attached garage, itâ€™s built for comfort and style. The open-concept main floor features 10-foot ceilings, oversized windows, and a large sliding patio door that fills the space with natural light. The kitchen is a showstopper with dual-tone high-gloss cabinetry, quartz counters, a breakfast island, stainless steel appliances, and a built-in coffee bar. Upstairs, the primary retreat includes a spa-inspired ensuite with a freestanding tub, glass walk-in shower, and a spacious walk-in closet. Two additional bedrooms, a full bathroom, and a laundry room complete the upper level. The finished basement includes in-floor heating, a 4th bedroom, full bath, and a flex room with a kitchenette. Additional features include A/C, triple-pane windows, maintenance-free patio and deck, and high-efficiency mechanicals. Modern luxury awaits in the heart of Blue Quill

Built in 2017

Essential Information

MLS® #	E4440133
Price	\$699,900
Bedrooms	4



Bathrooms	3.50
Full Baths	3
Half Baths	1
Square Footage	1,852
Acres	0.00
Year Built	2017
Type	Single Family
Sub-Type	Detached Single Family
Style	2 Storey
Status	Active

Community Information

Address	11511 24 Avenue
Area	Edmonton
Subdivision	Blue Quill
City	Edmonton
County	ALBERTA
Province	AB
Postal Code	T6J 3R6

Amenities

Amenities	Air Conditioner, Ceiling 9 ft., Closet Organizers, Deck, Detectors Smoke, Fire Pit, No Animal Home, No Smoking Home, Infill Property
Parking Spaces	2
Parking	Double Garage Attached, Heated, See Remarks

Interior

Interior Features	ensuite bathroom
Appliances	Air Conditioning-Central, Dishwasher-Built-In, Garage Opener, Hood Fan, Refrigerator, Stacked Washer/Dryer, Stove-Electric, Garage Heater
Heating	Forced Air-1, Natural Gas
Fireplace	Yes
Fireplaces	Wall Mount, See Remarks
Stories	3
Has Basement	Yes
Basement	Partial, Finished

Exterior

Exterior	Wood, Brick, Vinyl
----------	--------------------

Exterior Features	Fenced, Landscaped, Playground Nearby, Public Transportation, Schools, Shopping Nearby, See Remarks
Roof	Asphalt Shingles
Construction	Wood, Brick, Vinyl
Foundation	Concrete Perimeter

Additional Information

Date Listed	June 3rd, 2025
Days on Market	11
Zoning	Zone 16

DATA IS DEEMED RELIABLE BUT IS NOT GUARANTEED ACCURATE BY THE REALTORS® ASSOCIATION OF EDMONTON. COPYRIGHT 2025 BY THE REALTORS® ASSOCIATION OF EDMONTON. ALL RIGHTS RESERVED.Trademarks are owned or controlled by the Canadian Real Estate Association (CREA) and identify real estate professionals who are members of CREA (REALTOR®, REALTORS®) and/or the quality of services they provide (MLS®, Multiple Listing Service®)

Listing information last updated on June 14th, 2025 at 1:17pm MDT