

# \$845,000 - 22 Eldridge Point(e), St. Albert

MLS® #E4440158

**\$845,000**

5 Bedroom, 5.00 Bathroom, 2,392 sqft  
Single Family on 0.00 Acres

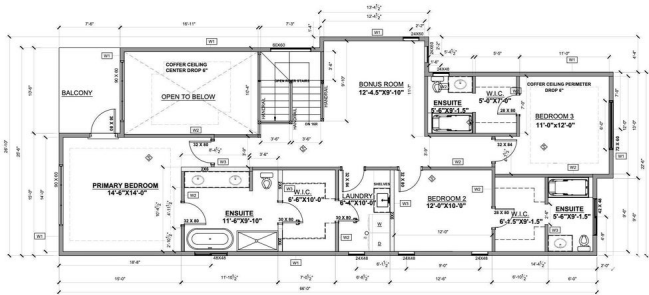
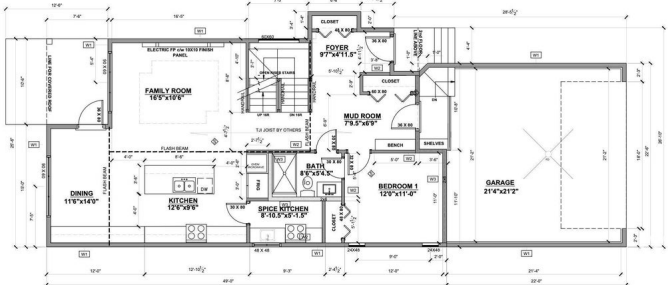
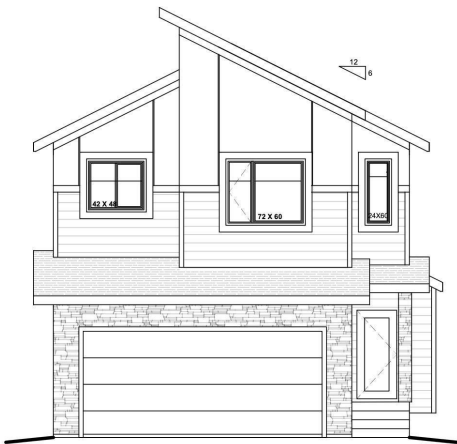
Erin Ridge North, St. Albert, AB

Beautiful 2-storey walkout home backing onto a peaceful pond with stunning sunset views and access to scenic walking paths. Three covered outdoor spaces—off the dining room, primary suite, and ground-level patio. Main floor features an open-concept kitchen, spacious living/dining areas, and a bedroom with an adjacent full bath—perfect for guests or a home office. Upstairs offers 3 bedrooms including a luxurious primary suite with a spa-inspired ensuite: soaker tub, oversized shower, double vanity, and private walk-in closet. Each upstairs bedroom has access to a full bathroom. The finished walkout basement includes a second full kitchen, family room with wet bar, games area, and a 5th bedroom. Oversized garage and close to schools, parks, shopping, and major roads. Ideal for families or multi-generational living!

Built in 2025

## Essential Information

MLS® #	E4440158
Price	\$845,000
Bedrooms	5
Bathrooms	5.00
Full Baths	5
Square Footage	2,392
Acres	0.00



Year Built	2025
Type	Single Family
Sub-Type	Detached Single Family
Style	2 Storey
Status	Active

### Community Information

Address	22 Eldridge Point(e)
Area	St. Albert
Subdivision	Erin Ridge North
City	St. Albert
County	ALBERTA
Province	AB
Postal Code	T8N 7Z9

### Amenities

Amenities	Ceiling 9 ft., Walkout Basement, Wet Bar, 9 ft. Basement Ceiling
Parking	Double Garage Attached
Is Waterfront	Yes

### Interior

Interior Features	ensuite bathroom
Appliances	See Remarks
Heating	Forced Air-1, Natural Gas
Stories	3
Has Basement	Yes
Basement	Full, Finished

### Exterior

Exterior	Wood, Vinyl
Exterior Features	Backs Onto Lake, Golf Nearby, Playground Nearby, Schools, Shopping Nearby
Roof	Asphalt Shingles
Construction	Wood, Vinyl
Foundation	Concrete Perimeter

### Additional Information

Date Listed	June 3rd, 2025
Days on Market	105

## Zoning

## Zone 24

DATA IS DEEMED RELIABLE BUT IS NOT GUARANTEED ACCURATE BY THE REALTORS® ASSOCIATION OF EDMONTON. COPYRIGHT 2025 BY THE REALTORS® ASSOCIATION OF EDMONTON. ALL RIGHTS RESERVED. Trademarks are owned or controlled by the Canadian Real Estate Association (CREA) and identify real estate professionals who are members of CREA (REALTOR®, REALTORS®) and/or the quality of services they provide (MLS®, Multiple Listing Service®)

Listing information last updated on September 16th, 2025 at 1:17am MDT