

\$199,500 - 5430 Highway 16, Rural Parkland County

MLS® #E4440453

\$199,500

1 Bedroom, 0.50 Bathroom, 576 sqft

Rural on 8.52 Acres

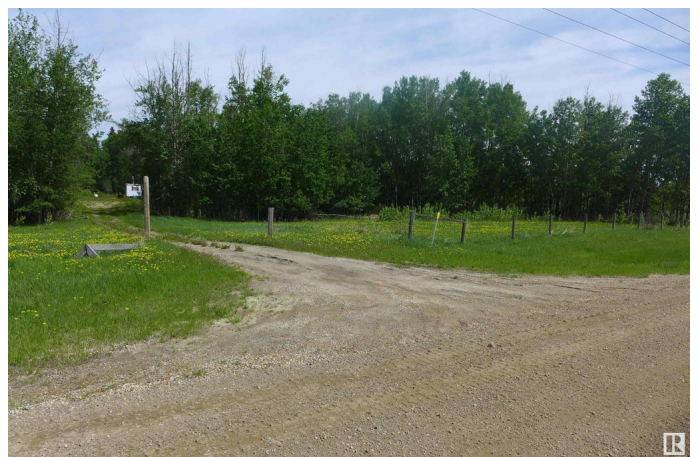
None, Rural Parkland County, AB

THIS SUPERB TREED 8.52 ACRES FRONTS HWY 16 AND 45 MINUTES FROM EDMONTON AND A FEW MINUTES FROM FOUR BOATING/FISHING LAKES. Nicely treed acreage out of a sub-division with a cleared yard site with graveled road & parking area. An ideal location to run your business from or to build your dream home with privacy or a weekend get-a-way. The mobile would need your handyman skills to make it your now home. There is power; septic tank & field & drilled well. Zoned Agricultural General District. The converted bus/RV is negotiable. Check this property out.

Built in 1971

Essential Information

MLS® #	E4440453
Price	\$199,500
Bedrooms	1
Bathrooms	0.50
Half Baths	1
Square Footage	576
Acres	8.52
Year Built	1971
Type	Rural
Sub-Type	Detached Single Family
Style	Bungalow



Status Active

Community Information

Address 5430 Hghway 16
Area Rural Parkland County
Subdivision None
City Rural Parkland County
County ALBERTA
Province AB
Postal Code T0E 0W0

Amenities

Features Fire Pit

Interior

Heating Forced Air-1, Wood Stove, Propane, Wood
Stories 1
Has Basement Yes
Basement None, No Basement

Exterior

Exterior Features Golf Nearby, Private Setting, Recreation Use, Schools, Shopping
Nearby, Treed Lot
Foundation Block

Additional Information

Date Listed June 4th, 2025
Days on Market 92
Zoning Zone 70

DATA IS DEEMED RELIABLE BUT IS NOT GUARANTEED ACCURATE BY THE REALTORS® ASSOCIATION OF EDMONTON. COPYRIGHT 2025 BY THE REALTORS® ASSOCIATION OF EDMONTON. ALL RIGHTS RESERVED.Trademarks are owned or controlled by the Canadian Real Estate Association (CREA) and identify real estate professionals who are members of CREA (REALTOR®, REALTORS®) and/or the quality of services they provide (MLS®, Multiple Listing Service®)
Listing information last updated on September 4th, 2025 at 2:32am MDT