

\$579,000 - 7204 Cardinal Way, Edmonton

MLS® #E4440721

\$579,000

4 Bedroom, 3.50 Bathroom, 1,442 sqft

Single Family on 0.00 Acres

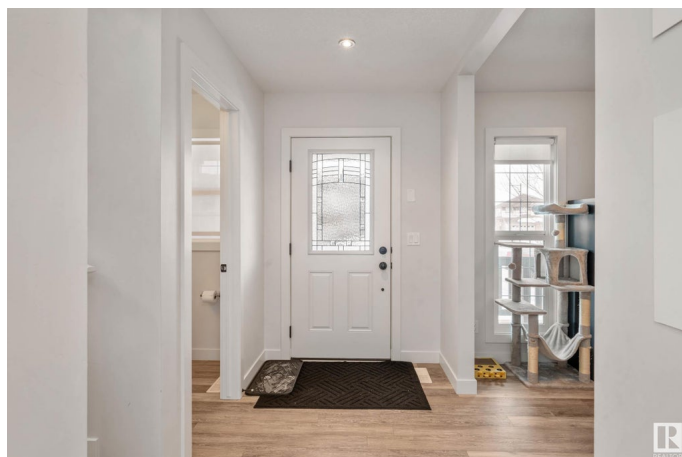
Chappelle Area, Edmonton, AB

Welcome the much sought-after Chappelle community. It is known as a family friendly community complete with parks, schools, public transportation, shopping, dining and more! On the main floor you will find the open concept kitchen/living area to be bright and open. The kitchen offers plenty of cupboard and counter space, perfect for entertaining. Off the kitchen is where there is access to a private yard and a detached FOUR car garage! Upstairs you will find three well sized bdrms. You will love the ensuite and walk-in closet in the master bdrm! The basement has a one bdrm completely self contained legal suite. Perfect as a mortgage helper!

Built in 2016

Essential Information

MLS® #	E4440721
Price	\$579,000
Bedrooms	4
Bathrooms	3.50
Full Baths	3
Half Baths	1
Square Footage	1,442
Acres	0.00
Year Built	2016
Type	Single Family



Sub-Type	Detached Single Family
Style	2 Storey
Status	Active

Community Information

Address	7204 Cardinal Way
Area	Edmonton
Subdivision	Chappelle Area
City	Edmonton
County	ALBERTA
Province	AB
Postal Code	T6W 2Y5

Amenities

Amenities	Deck, Detectors Smoke, No Smoking Home
Parking	Quad or More Detached

Interior

Interior Features	ensuite bathroom
Appliances	Garage Control, Garage Opener, Dryer-Two, Refrigerators-Two, Stoves-Two, Washers-Two, Dishwasher-Two, Microwave Hood Fan-Two
Heating	Forced Air-2, Natural Gas
Stories	3
Has Suite	Yes
Has Basement	Yes
Basement	Full, Finished

Exterior

Exterior	Wood, Asphalt, Vinyl
Exterior Features	Back Lane, Fenced, Landscaped, Playground Nearby, Public Transportation, Schools, Shopping Nearby
Roof	Asphalt Shingles
Construction	Wood, Asphalt, Vinyl
Foundation	Concrete Perimeter

Additional Information

Date Listed	June 5th, 2025
Days on Market	59
Zoning	Zone 55

HOA Fees 100

HOA Fees Freq. Annually

DATA IS DEEMED RELIABLE BUT IS NOT GUARANTEED ACCURATE BY THE REALTORS® ASSOCIATION OF EDMONTON. COPYRIGHT 2025 BY THE REALTORS® ASSOCIATION OF EDMONTON. ALL RIGHTS RESERVED. Trademarks are owned or controlled by the Canadian Real Estate Association (CREA) and identify real estate professionals who are members of CREA (REALTOR®, REALTORS®) and/or the quality of services they provide (MLS®, Multiple Listing Service®)

Listing information last updated on August 3rd, 2025 at 3:47am MDT