

## \$335,000 - 8315 180 Avenue, Edmonton

MLS® #E4442275

**\$335,000**

3 Bedroom, 2.50 Bathroom, 1,442 sqft  
Condo / Townhouse on 0.00 Acres

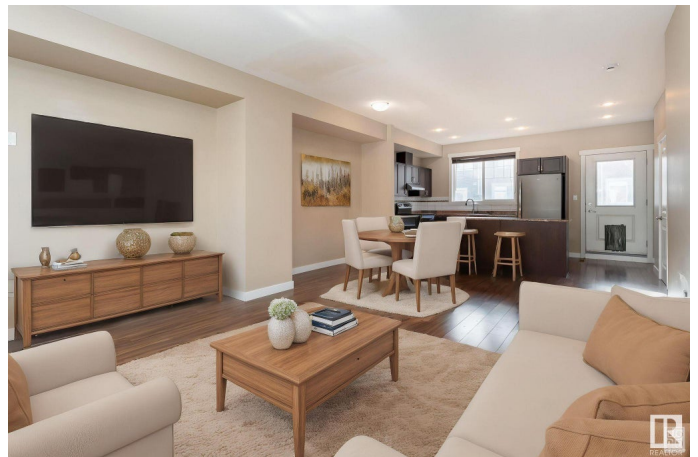
Klarvatten, Edmonton, AB

RARE 3 CAR PARKING! (Double garage with an additional stall in front of garage). Welcome to this stylish 3 bed, 2.5 bath townhouse in desirable Klarvatten with 1402 sq ft of comfortable living space. The main floor features 9'™ ceilings, a bright open-concept layout, and a modern kitchen with stainless steel appliances, a large peninsula island, and ample storage. Relax in the cozy living room, enjoy meals in the dining area, or step onto the balcony for fresh air. Upstairs, the spacious primary bedroom includes a 4-piece ensuite and great closet space, plus two more bedrooms, a full bath, and laundry room. Includes a double attached garage and extra parking. Steps from Poplar Lake, walking trails, and close to the Henday, shops, and amenities. (images are Virtually staged)

Built in 2012

### Essential Information

|                |           |
|----------------|-----------|
| MLS® #         | E4442275  |
| Price          | \$335,000 |
| Bedrooms       | 3         |
| Bathrooms      | 2.50      |
| Full Baths     | 2         |
| Half Baths     | 1         |
| Square Footage | 1,442     |
| Acres          | 0.00      |



|            |                   |
|------------|-------------------|
| Year Built | 2012              |
| Type       | Condo / Townhouse |
| Sub-Type   | Townhouse         |
| Style      | 2 Storey          |
| Status     | Active            |

### Community Information

|             |                 |
|-------------|-----------------|
| Address     | 8315 180 Avenue |
| Area        | Edmonton        |
| Subdivision | Klarvatten      |
| City        | Edmonton        |
| County      | ALBERTA         |
| Province    | AB              |
| Postal Code | T6X 0Y2         |

### Amenities

|                |                        |
|----------------|------------------------|
| Amenities      | See Remarks            |
| Parking Spaces | 3                      |
| Parking        | Double Garage Attached |

### Interior

|                   |  |
|-------------------|--|
| Interior Features | ensuite bathroom   |
| Appliances        | Dishwasher-Built-In, Dryer, Refrigerator, Stove-Electric, Washer |
| Heating           | Forced Air-1, Natural Gas  |
| Stories           | 3  |
| Has Basement      | Yes  |
| Basement          | None, No Basement  |

### Exterior

|                   |   |
|-------------------|---|
| Exterior          | Wood, Vinyl   |
| Exterior Features | Landscaped, Public Transportation, Schools, Shopping Nearby |
| Roof              | Asphalt Shingles  |
| Construction      | Wood, Vinyl   |
| Foundation        | Concrete Perimeter  |

### Additional Information

|                |                 |
|----------------|-----------------|
| Date Listed    | June 13th, 2025 |
| Days on Market | 2               |
| Zoning         | Zone 28         |

Condo Fee                \$270

DATA IS DEEMED RELIABLE BUT IS NOT GUARANTEED ACCURATE BY THE REALTORS® ASSOCIATION OF EDMONTON. COPYRIGHT 2025 BY THE REALTORS® ASSOCIATION OF EDMONTON. ALL RIGHTS RESERVED.Trademarks are owned or controlled by the Canadian Real Estate Association (CREA) and identify real estate professionals who are members of CREA (REALTOR®, REALTORS®) and/or the quality of services they provide (MLS®, Multiple Listing Service®)  
Listing information last updated on June 15th, 2025 at 11:47am MDT