

\$240,000 - 102 394 Windermere Road, Edmonton

MLS® #E4448458

\$240,000

2 Bedroom, 2.00 Bathroom, 825 sqft

Condo / Townhouse on 0.00 Acres

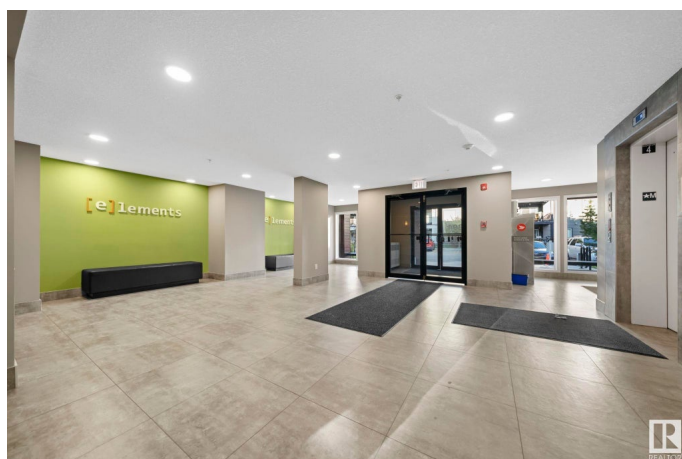
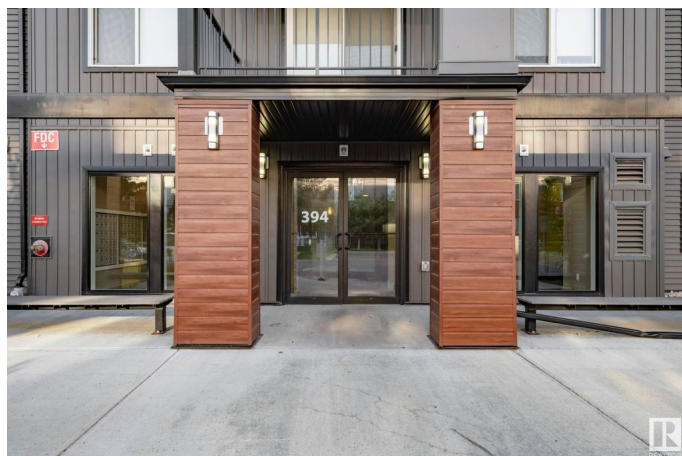
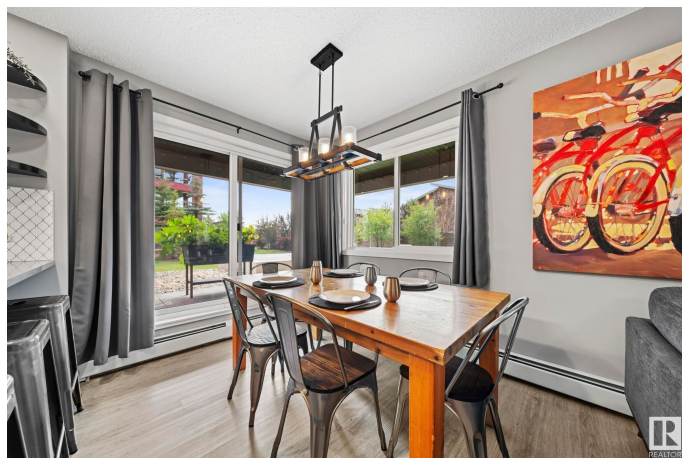
Windermere, Edmonton, AB

Prepare to be delighted by this rare 2bd/2ba ground floor corner unit that feels more like a private bungalow! Bright and stylish with two-tone kitchen cabinets, quartz countertops and upgraded lighting, it shows like new. The smart layout includes spacious a primary with ensuite, a generous front closet and large pantry. The real showstopper? A huge wraparound patio- mostly covered and backing onto greenspace- your own retreat! Includes two titled parking spots (one underground, one surface). Just steps from everything you need: shopping, dining, schools, recreation and beautiful river valley trails. Ideal for young families, students, professionals, downsizers and investors alike. Do not miss this Windermere gem!

Built in 2018

Essential Information

MLS® #	E4448458
Price	\$240,000
Bedrooms	2
Bathrooms	2.00
Full Baths	2
Square Footage	825
Acres	0.00
Year Built	2018



Type	Condo / Townhouse
Sub-Type	Lowrise Apartment
Style	Single Level Apartment
Status	Active

Community Information

Address	102 394 Windermere Road
Area	Edmonton
Subdivision	Windermere
City	Edmonton
County	ALBERTA
Province	AB
Postal Code	T6W 0R1

Amenities

Amenities	No Animal Home, No Smoking Home, Parking-Plug-Ins, Parking-Visitor, Patio, Vinyl Windows
Parking Spaces	2
Parking	Stall, Underground

Interior

Interior Features	ensuite bathroom
Appliances	Dishwasher-Built-In, Microwave Hood Fan, Refrigerator, Stacked Washer/Dryer, Stove-Electric
Heating	Baseboard, Natural Gas
# of Stories	4
Stories	1
Has Basement	Yes
Basement	None, No Basement

Exterior

Exterior	Wood, Vinyl
Exterior Features	Golf Nearby, Landscaped, Low Maintenance Landscape, Playground Nearby, Public Transportation, Schools, Shopping Nearby
Roof	Asphalt Shingles
Construction	Wood, Vinyl
Foundation	Concrete Perimeter

School Information

Elementary	Dan. Woodall, St.JohnXXIII
------------	----------------------------

Middle	Riverbend, St.JohnXXIII
High	Lil. Osborn, Margaret Mary

Additional Information

Date Listed	July 18th, 2025
Days on Market	13
Zoning	Zone 56
Condo Fee	\$505

DATA IS DEEMED RELIABLE BUT IS NOT GUARANTEED ACCURATE BY THE REALTORS® ASSOCIATION OF EDMONTON. COPYRIGHT 2025 BY THE REALTORS® ASSOCIATION OF EDMONTON. ALL RIGHTS RESERVED.Trademarks are owned or controlled by the Canadian Real Estate Association (CREA) and identify real estate professionals who are members of CREA (REALTOR®, REALTORS®) and/or the quality of services they provide (MLS®, Multiple Listing Service®)

Listing information last updated on July 31st, 2025 at 12:18pm MDT