

\$599,888 - 16861 58a Street, Edmonton

MLS® #E4454195

\$599,888

3 Bedroom, 2.50 Bathroom, 2,180 sqft

Single Family on 0.00 Acres

McConachie Area, Edmonton, AB

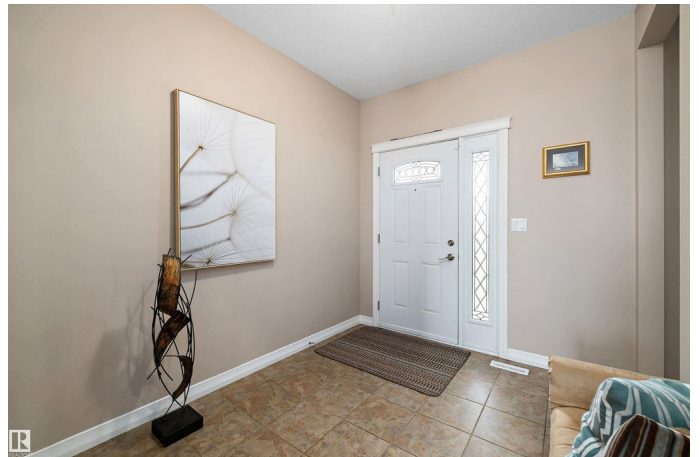
Welcome to McConachie! This beautifully upgraded 2-storey offers an inviting open main floor with 9â€™™ ceilings, quartz countertops, stainless appliances, corner pantry & dining area that flows to 2 cedar decks with stylish glass railings. A bright living room with gas fireplace adds warmth & charm. Beautiful Hunter Douglas blinds! Upstairs: a spacious bonus room, 3 bedrooms including a primary with walk-in & spa ensuite, plus laundry with nearly new washer/dryer. All upper walls are insulated for quiet living, while 3-pane front windows enhance efficiency. The finished basement expands your lifestyle with a huge rec room, gym area, workshop, storage & high-efficiency mechanicals with water softener, reverse osmosis & central A/C. Outdoors enjoy a 20â€™™x24â€™™ garage, 12â€™™x16â€™™ shed with overhead door, landscaped yard, fruit tree & back lane access. Family-friendly McConachie offers schools, shopping, parks, transit & quick Anthony Henday access. This beautiful home is super family-friendly! Shows a 10/10! HURRY!

Built in 2010

Essential Information

MLS® # E4454195

Price \$599,888



Bedrooms	3
Bathrooms	2.50
Full Baths	2
Half Baths	1
Square Footage	2,180
Acres	0.00
Year Built	2010
Type	Single Family
Sub-Type	Detached Single Family
Style	2 Storey
Status	Active

Community Information

Address	16861 58a Street
Area	Edmonton
Subdivision	McConachie Area
City	Edmonton
County	ALBERTA
Province	AB
Postal Code	T5Y 0N1

Amenities

Amenities	Air Conditioner, Deck, See Remarks
Parking	Double Garage Attached

Interior

Interior Features	ensuite bathroom
Appliances	Dishwasher-Built-In, Dryer, Microwave Hood Fan, Refrigerator, Storage Shed, Stove-Electric, Washer, Window Coverings
Heating	Forced Air-1, Natural Gas
Fireplace	Yes
Fireplaces	Mantel, Tile Surround
Stories	3
Has Basement	Yes
Basement	Full, Finished

Exterior

Exterior	Wood, Vinyl
Exterior Features	Back Lane, Cul-De-Sac, Fenced, Flat Site, Low Maintenance

Landscape, Playground Nearby, Public Transportation, Schools, Shopping Nearby, See Remarks

Roof	Asphalt Shingles
Construction	Wood, Vinyl
Foundation	Concrete Perimeter

School Information

Elementary	Soraya Hafez School
Middle	Steele Heights School
High	M.E. LaZerte School

Additional Information

Date Listed	August 22nd, 2025
Days on Market	1
Zoning	Zone 03

DATA IS DEEMED RELIABLE BUT IS NOT GUARANTEED ACCURATE BY THE REALTORS® ASSOCIATION OF EDMONTON. COPYRIGHT 2025 BY THE REALTORS® ASSOCIATION OF EDMONTON. ALL RIGHTS RESERVED. Trademarks are owned or controlled by the Canadian Real Estate Association (CREA) and identify real estate professionals who are members of CREA (REALTOR®, REALTORS®) and/or the quality of services they provide (MLS®, Multiple Listing Service®)

Listing information last updated on August 23rd, 2025 at 6:47am MDT