

\$420,000 - 210 Schubert Street, Leduc

MLS® #E4454221

\$420,000

3 Bedroom, 2.50 Bathroom, 1,602 sqft

Single Family on 0.00 Acres

Suntree (Leduc), Leduc, AB

Welcome to this bright and inviting home in Suntree, ideally located on a quiet street across from a playground. This thoughtfully designed property is in a family-friendly neighbourhood close to schools, walking paths, shopping, and more. Step onto the charming front porch before entering a spacious foyer with ample storage, leading into a warm & welcoming main floor. The kitchen offers granite countertops, a center island, plenty of cupboards, & a pantry, and opens to the dining area & living room with a cozy gas fireplace. A 2-pc bath & convenient main floor laundry complete this level. Upstairs you'll find three comfortable bedrooms, including a spacious primary suite w/ a large walk-in closet & an ensuite featuring a glass and tile shower. This level also has a 4-pc main bath. The basement is partly finished and ready for your personal touch. Outside, enjoy the back deck and a large yard with a shed and space for RV parking. Central A/C adds to the comfort of this home. Just move in and enjoy!

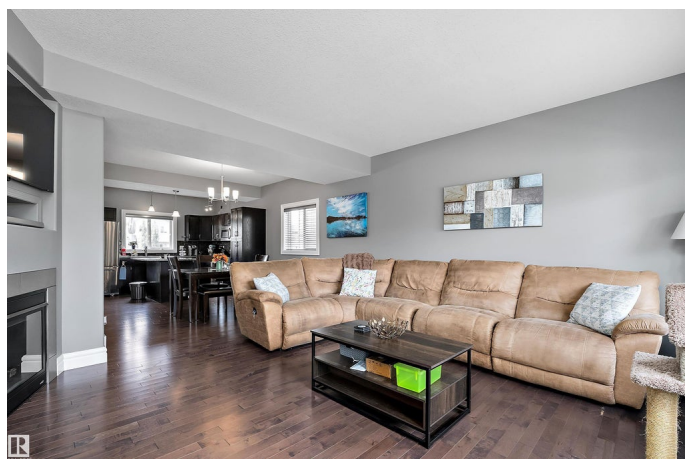
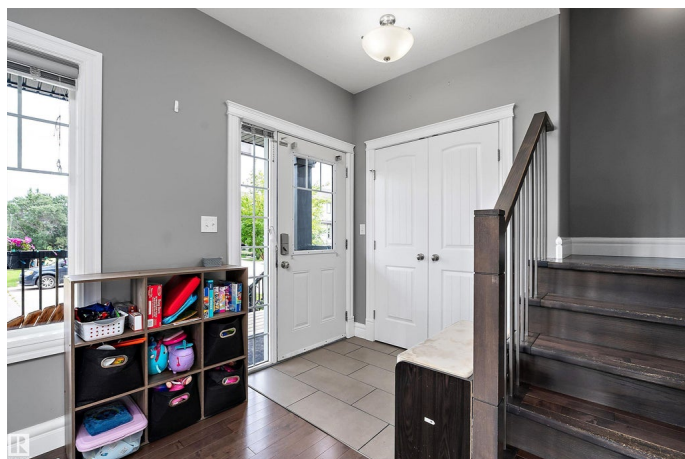
Built in 2013

Essential Information

MLS® # E4454221

Price \$420,000

Bedrooms 3



Bathrooms	2.50
Full Baths	2
Half Baths	1
Square Footage	1,602
Acres	0.00
Year Built	2013
Type	Single Family
Sub-Type	Detached Single Family
Style	2 Storey
Status	Active

Community Information

Address	210 Schubert Street
Area	Leduc
Subdivision	Suntree (Leduc)
City	Leduc
County	ALBERTA
Province	AB
Postal Code	T9E 8R8

Amenities

Amenities	Air Conditioner
Parking	Parking Pad Cement/Paved, RV Parking

Interior

Interior Features	ensuite bathroom
Appliances	Dishwasher-Built-In, Dryer, Oven-Microwave, Refrigerator, Storage Shed, Stove-Electric, Washer, Window Coverings
Heating	Forced Air-1, Natural Gas
Fireplace	Yes
Fireplaces	Tile Surround
Stories	2
Has Basement	Yes
Basement	Full, Partially Finished

Exterior

Exterior	Wood, Vinyl
Exterior Features	Airport Nearby, Back Lane, Golf Nearby, Playground Nearby, Schools, Shopping Nearby, See Remarks

Roof	Asphalt Shingles
Construction	Wood, Vinyl
Foundation	Concrete Perimeter

Additional Information

Date Listed	August 22nd, 2025
Days on Market	1
Zoning	Zone 81

DATA IS DEEMED RELIABLE BUT IS NOT GUARANTEED ACCURATE BY THE REALTORS® ASSOCIATION OF EDMONTON. COPYRIGHT 2025 BY THE REALTORS® ASSOCIATION OF EDMONTON. ALL RIGHTS RESERVED.Trademarks are owned or controlled by the Canadian Real Estate Association (CREA) and identify real estate professionals who are members of CREA (REALTOR®, REALTORS®) and/or the quality of services they provide (MLS®, Multiple Listing Service®)

Listing information last updated on August 23rd, 2025 at 12:32pm MDT