

\$379,900 - 9128 Shaw Way, Edmonton

MLS® #E4458447

\$379,900

3 Bedroom, 2.50 Bathroom, 1,216 sqft
Single Family on 0.00 Acres

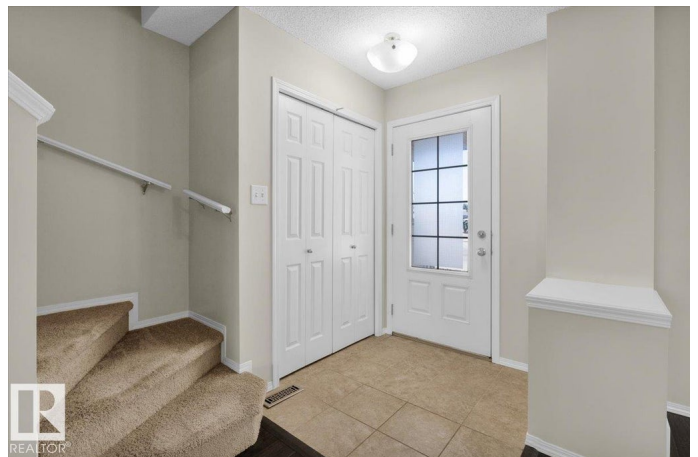
Summerside, Edmonton, AB

Lake Summerside half duplex is ready for immediate occupancy – you could enjoy the winter holidays in front of your fireplace in your cozy new 3 bedroom home. This is a great floorplan open front to back with lots of sunlight. There is a nicely defined space for dining in front of the patio doors & the kitchen has a raised eating bar, stainless steel appliances & plenty of maple cabinets. Huge deck looks like a perfect place to invite friends and family over for a summer BBQ. Gardeners will delight in the raised planting boxes and be excited to bring their homegrown harvest to the dinner table. Double garage is ready to protect your vehicles, with a loft storage area for your convenience. Enjoy summers at the Beach where you can swim, fish or kayak or SUP on the 32 acre lake! In the winter there are night lit skating rinks and a skating loop or set up your ice fishing tent and drop a line & test your luck. There are always festivities going on at the beach club! *Some photos have been virtually staged*

Built in 2010

Essential Information

MLS® #	E4458447
Price	\$379,900
Bedrooms	3



Bathrooms	2.50
Full Baths	2
Half Baths	1
Square Footage	1,216
Acres	0.00
Year Built	2010
Type	Single Family
Sub-Type	Half Duplex
Style	2 Storey
Status	Active

Community Information

Address	9128 Shaw Way
Area	Edmonton
Subdivision	Summerside
City	Edmonton
County	ALBERTA
Province	AB
Postal Code	T6X 0S4

Amenities

Amenities	On Street Parking, Club House, Deck, Lake Privileges, Tennis Courts, See Remarks
Parking Spaces	2
Parking	Double Garage Detached

Interior

Interior Features	ensuite bathroom
Appliances	Dishwasher-Built-In, Dryer, Garage Control, Garage Opener, Humidifier-Power(Furnace), Microwave Hood Fan, Refrigerator, Stove-Electric, Washer, Window Coverings
Heating	Forced Air-1, Natural Gas
Fireplace	Yes
Fireplaces	Mantel, Tile Surround
Stories	2
Has Basement	Yes
Basement	Full, Unfinished

Exterior

Exterior	Wood, Vinyl
Exterior Features	Back Lane, Beach Access, Fenced, Golf Nearby, Lake Access Property, Landscaped, Picnic Area, Playground Nearby, Public Transportation, Schools, Shopping Nearby, Vegetable Garden, See Remarks
Roof	Asphalt Shingles
Construction	Wood, Vinyl
Foundation	Concrete Perimeter

School Information

Elementary	Michael Strembitsky K-6
Middle	Michael Strembitsky 7-9
High	J.Percy Page/Holy Trinity

Additional Information

Date Listed	September 18th, 2025
Days on Market	1
Zoning	Zone 53
HOA Fees	453.02
HOA Fees Freq.	Annually

DATA IS DEEMED RELIABLE BUT IS NOT GUARANTEED ACCURATE BY THE REALTORS® ASSOCIATION OF EDMONTON. COPYRIGHT 2025 BY THE REALTORS® ASSOCIATION OF EDMONTON. ALL RIGHTS RESERVED. Trademarks are owned or controlled by the Canadian Real Estate Association (CREA) and identify real estate professionals who are members of CREA (REALTOR®, REALTORS®) and/or the quality of services they provide (MLS®, Multiple Listing Service®)

Listing information last updated on September 19th, 2025 at 5:47am MDT