

Courtesy Of Sam Killick Of ARIVL

\$508,500 - 409 84 Street, Edmonton

MLS® #E4459385

\$508,500

4 Bedroom, 3.00 Bathroom, 1,279 sqft
Single Family on 0.00 Acres

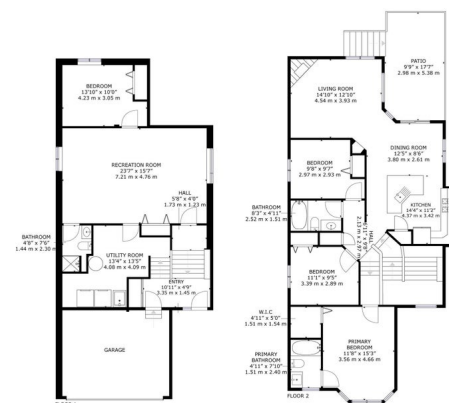
Ellerslie, Edmonton, AB

BEST VALUE HOME IN ELLERSLIE! RENOVATED KITCHEN, 4 BED, 3 BATHS, UPDATED ENSUITE, FINISHED BASEMENT & DOUBLE GARAGE with A/C! This stylish BI-LEVEL home in Ellerslie is perfect for a growing family with space, comfort, and upgrades galore. Cook like a pro in the modern kitchen with quartz counters, black faucet and hardware, white cabinets and 2021 stainless steel appliances. Retreat to the fresh ensuite with subway tile and sleek black fixtures. The fully finished basement shines with a huge rec room, large windows, and a spare bedroom/office—ideal for game nights, guests, or work-from-home. Major updates include NEWER shingles, washer, A/C, furnace & HWT (all 2022). Double garage with shelving plus a long pad fits a total of 4 vehicles! Just minutes to parks, schools, trails, South Edmonton Common, grocery stores, and quick Anthony Henday access. With natural light, smart layout, and family-friendly vibes, this home is truly move-in ready—don't wait, take a look today, and get ready to move in!

Built in 2004

Essential Information

MLS® # E4459385
Price \$508,500



409 84 ST SW
ELLERSLIE, EDMONTON

GROSS INTERNAL AREA
FLOOR 1: 829 sq ft, 76 m², FLOOR 2: 1162 sq ft, 108 m²
EXCLUDED AREAS: PATIO: 130 sq ft, 12 m²
TOTAL: 2091 sq ft, 194 m²

Bedrooms	4
Bathrooms	3.00
Full Baths	3
Square Footage	1,279
Acres	0.00
Year Built	2004
Type	Single Family
Sub-Type	Detached Single Family
Style	Bi-Level
Status	Active

Community Information

Address	409 84 Street
Area	Edmonton
Subdivision	Ellerslie
City	Edmonton
County	ALBERTA
Province	AB
Postal Code	T6X 1H8

Amenities

Amenities	Air Conditioner, Carbon Monoxide Detectors, Deck, Detectors Smoke, Vaulted Ceiling, Vinyl Windows
Parking Spaces	4
Parking	Double Garage Attached, Parking Pad Cement/Paved

Interior

Interior Features	ensuite bathroom
Appliances	Air Conditioning-Central, Dishwasher-Built-In, Dryer, Garage Control, Garage Opener, Microwave Hood Fan, Refrigerator, Stove-Electric, Washer, TV Wall Mount
Heating	Forced Air-1, Natural Gas
Fireplace	Yes
Fireplaces	Corner, Mantel, Stone Facing
Stories	3
Has Basement	Yes
Basement	Full, Finished

Exterior

Exterior	Wood, Vinyl
Exterior Features	Airport Nearby, Fenced, Landscaped, No Back Lane, No Through Road, Playground Nearby, Public Transportation, Schools, Shopping Nearby
Roof	Asphalt Shingles
Construction	Wood, Vinyl
Foundation	Concrete Perimeter

School Information

Elementary	Sakaw School
Middle	Kisāwāçtisiwin School
High	J. Percy Page School

Additional Information

Date Listed	September 25th, 2025
Days on Market	25
Zoning	Zone 53

DATA IS DEEMED RELIABLE BUT IS NOT GUARANTEED ACCURATE BY THE REALTORS® ASSOCIATION OF EDMONTON. COPYRIGHT 2025 BY THE REALTORS® ASSOCIATION OF EDMONTON. ALL RIGHTS RESERVED. Trademarks are owned or controlled by the Canadian Real Estate Association (CREA) and identify real estate professionals who are members of CREA (REALTOR®, REALTORS®) and/or the quality of services they provide (MLS®, Multiple Listing Service®)

Listing information last updated on October 20th, 2025 at 12:17am MDT